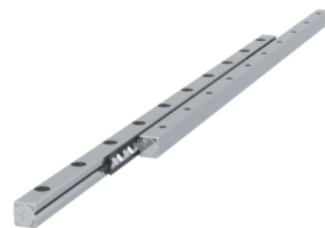


## GRVP06 - 500 - S

Call 800-321-7800 or visit us online at [www.nookindustries.com](http://www.nookindustries.com) to configure and order your GRVP06 - 500 - S today!



### Product Info

Part Number	GRVP06 - 500 - S
Max Stroke [mm]	412

### Material Specification

Rail	SUS440C + Ni
Roller	100Cr6
Retainer	POM Plastic

### Dimensions

H [mm]	31
T [mm]	15
W [mm]	14
L [mm]	500
n [mm]	20
P [mm]	50
L1 [mm]	25
L2 [mm]	2
ØD [mm]	6
L3 [mm]	300
R [mm]	33
P1 [mm]	5.4
P2 [mm]	9
A [mm]	6
M	M6
d1 [mm]	5.3
d2 [mm]	9.5
B [mm]	5.2

### Performance Specifications

Dynamic C [N]	2570
Static C0 [N]	2632
Capacity Per Bearing [N]	877

### Weight

Per Rail [g]	1539
--------------	------