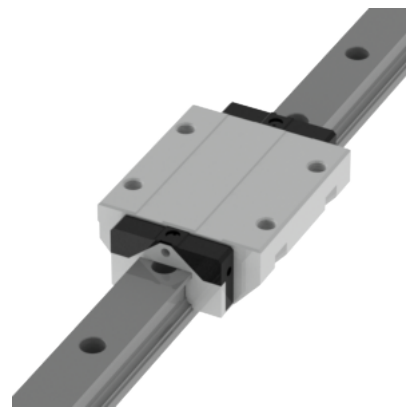
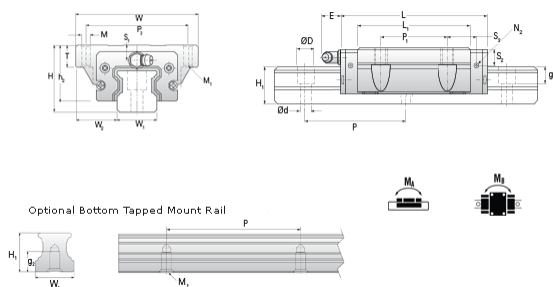


## NHRC 35 FL Assembly

Call 800-321-7800 or visit us online at [www.nookindustries.com](http://www.nookindustries.com) to configure and order your NHRC 35 FL Assembly today!



<b>Dimensions</b>	
H [mm]	48
W2 [mm]	33
<b>Long Caged Ball Block Four Mounting Holes (Runner Block)Details</b>	
Size [mm]	35
<b>(Runner Block)Dimensions</b>	
W [mm]	100
L [mm]	136.6
L1 [mm]	111.6
h2 [mm]	40.4
P1 [mm]	62
P2 [mm]	82
M1 [mm]	M8 Thru Bolt
M × g2	M10 × 15
T [mm]	16
N1	M6 × 10
N2	M6 × 7
N3 [O-Ring Seal]	P5
E [mm]	12
S1 [mm]	8
S2 [mm]	15
S3 [mm]	30.1
S4 [mm]	30.8
<b>(Runner Block)Forces and Torques</b>	
Basic Load Ratings C [kN]	54.7
Basic Load Ratings C0 [kN]	106.5
Static Moment Ratings-Ma [N-m]	1755.0
Static Moment Ratings-Mb [N-m]	1755.0
Static Moment Ratings-Mc [N-m]	2185.0
<b>(Runner Block)Weight</b>	
Weight-Block [g]	2000
<b>Caged Ball Rail Top Mount (Top Mount Rail)Details</b>	
Size [mm]	35
<b>(Top Mount Rail)Dimensions</b>	
W1 [mm]	34
H1 [mm]	32
P [mm]	80
D [mm]	14
d1 [mm]	9
g1 [mm]	12
<b>(Top Mount Rail)Weight</b>	
Weights-Rail [g/m]	6790.0
<b>Caged Ball Rail Bottom Tapped Mount (Bottom Mount Rail)Details</b>	
Size [mm]	35
<b>(Bottom Mount Rail)Dimensions</b>	
W1 [mm]	34
H1 [mm]	32
P [mm]	80
M × g3	M8 x 15
<b>(Bottom Mount Rail)Weight</b>	
Weights-Rail [g/m]	6790.0