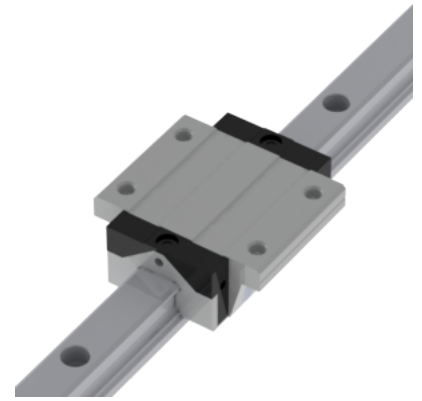
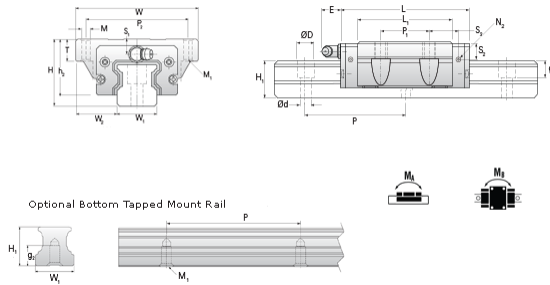


## NARC 15 FN Assembly

Call 800-321-7800 or visit us online at [www.nookindustries.com](http://www.nookindustries.com) to configure and order your NARC 15 FN Assembly today!



|  |              |
|--|--------------|
| <b>Dimensions</b>  |              |
| H [mm]   | 24           |
| W2 [mm]  | 18.5         |
| <b>Standard Caged Ball Block Four Mounting Holes (Runner Block)Details</b> |              |
| Size [mm]  | 15           |
| <b>(Runner Block)Dimensions</b>  |              |
| W [mm]   | 52           |
| L [mm]   | 55.5         |
| L1 [mm]  | 40.3         |
| h2 [mm]  | 20.7         |
| P1 [mm]  | 26           |
| P2 [mm]  | 41           |
| M1 [mm]  | M4 Thru Bolt |
| M × g2   | M5 × 7       |
| T [mm]   | 7            |
| N1   | M3 × 6.5     |
| N2   | M3 × 6       |
| N3 [O-Ring Seal]   | P3           |
| E [mm]   | 3.5          |
| S1 [mm]  | 4.5          |
| S2 [mm]  | 7.5          |
| S3 [mm]  | 8.9          |
| S4 [mm]  | 10.9         |
| <b>(Runner Block)Forces and Torques</b>                                    |              |
| Basic Load Ratings C [kN]  | 9.9          |
| Basic Load Ratings C0 [kN]   | 17.5         |
| Static Moment Ratings-Ma [N-m]   | 105.0        |
| Static Moment Ratings-Mb [N-m]   | 105.0        |
| Static Moment Ratings-Mc [N-m]   | 140.0        |
| <b>(Runner Block)Weight</b>  |              |
| Weight-Block [g]   | 184          |
| <b>Caged Ball Rail Top Mount (Top Mount Rail)Details</b>                   |              |
| Size [mm]  | 15           |
| <b>(Top Mount Rail)Dimensions</b>  |              |
| W1 [mm]  | 15           |
| H1 [mm]  | 15           |
| P [mm]   | 60           |
| D [mm]   | 7.5          |
| d1 [mm]  | 4.5          |
| g1 [mm]  | 5.3          |
| <b>(Top Mount Rail)Weight</b>  |              |
| Weights-Rail [g/m]   | 1290.0       |
| <b>Caged Ball Rail Bottom Tapped Mount (Bottom Mount Rail)Details</b>      |              |
| Size [mm]  | 15           |
| <b>(Bottom Mount Rail)Dimensions</b>                                       |              |
| W1 [mm]  | 15           |
| H1 [mm]  | 15           |
| P [mm]   | 60           |
| M × g3   | M5 × 8       |
| <b>(Bottom Mount Rail)Weight</b>   |              |
| Weights-Rail [g/m]   | 1290.0       |