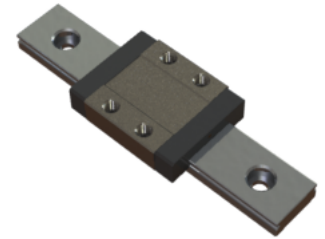


## NMR 7WN SS Assembly

Call 800-321-7800 or visit us online at [www.nookindustries.com](http://www.nookindustries.com) to configure and order your NMR 7WN SS Assembly today!



Optional Bottom Tapped Mount Rail

|  |          |
|--|----------|
| <b>Dimensions</b>  |          |
| H [mm]   | 9        |
| W2 [mm]  | 5.5      |
| <b>Wide Miniature Block Four Mounting Holes (Runner Block)Details</b>                |          |
| Size [mm]  | 7        |
| <b>(Runner Block)Dimensions</b>  |          |
| W [mm]   | 25       |
| L [mm]   | 31.6     |
| L1 [mm]  | 21.2     |
| h2 [mm]  | 7        |
| P1 [mm]  | 10       |
| P2 [mm]  | 19       |
| M × g2   | M3 × 3   |
| Ø [mm]   | 1.1      |
| S [mm]   | 1.9      |
| T [mm]   | 3.2      |
| <b>(Runner Block)Forces and Torques</b>  |          |
| Basic Load Ratings C [N]   | 1180     |
| Basic Load Ratings C0 [N]  | 2095     |
| Static Moment Ratings-Ma [N-m]   | 7.3      |
| Static Moment Ratings-Mb [N-m]   | 7.3      |
| Static Moment Ratings-Mc [N-m]   | 15.0     |
| <b>(Runner Block)Weight</b>  |          |
| Weight-Block [g]   | 19       |
| <b>Wide Miniature Rail Top Mount Single Row (Top Mount Rail)Details</b>              |          |
| Size [mm]  | 7        |
| <b>(Top Mount Rail)Dimensions</b>  |          |
| H [mm]   | 9        |
| W1 [mm]  | 14       |
| H1 [mm]  | 5.2      |
| P [mm]   | 30       |
| D [mm]   | 5        |
| d1 [mm]  | 3.5      |
| g1 [mm]  | 3.5      |
| <b>(Top Mount Rail)Weight</b>  |          |
| Weights-Rail [g/m]   | 516.0    |
| <b>Wide Miniature Rail Bottom Tapped Mount Single Row (Bottom Mount Rail)Details</b> |          |
| Size [mm]  | 7        |
| <b>(Bottom Mount Rail)Dimensions</b>   |          |
| H1 [mm]  | 7.5      |
| W1 [mm]  | 18       |
| P [mm]   | 30       |
| M1   | M4 x 0.7 |
| <b>(Bottom Mount Rail)Weight</b>   |          |
| Weights-Rail [g/m]   | 516.0    |