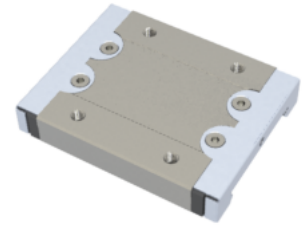


NMR 15WL EE

Call 800-321-7800 or visit us online at www.nookindustries.com to configure and order your NMR 15WL EE today!



Details

Size [mm] 15

Dimensions

W [mm] 60
 L [mm] 76
 L1 [mm] 57.6
 h2 [mm] 12.8
 P1 [mm] 35
 P2 [mm] 45
 M × g2 M4 × 4.5
 Ø [mm] 1.8
 S [mm] 3.3
 T [mm] 4.5

Forces and Torques

Basic Load Ratings C [N] 6725
 Basic Load Ratings C0 [N] 12580
 Static Moment Ratings-Ma [N-m] 257.6
 Static Moment Ratings-Mb [N-m] 93.1
 Static Moment Ratings-Mc [N-m] 93.1

Weight

Weight-Block [g] 203