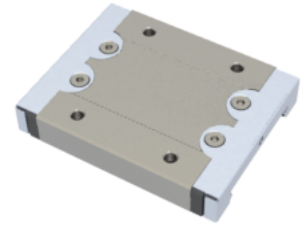
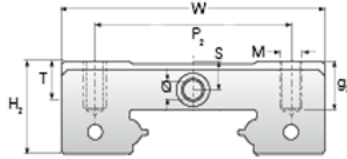


## NMR 15WL ZUE

Call 800-321-7800 or visit us online at [www.nookindustries.com](http://www.nookindustries.com) to configure and order your NMR 15WL ZUE today!



### Details

Size [mm] 15

### Dimensions

W [mm] 60  
 L [mm] 76  
 L1 [mm] 57.6  
 h2 [mm] 13.1  
 P1 [mm] 35  
 P2 [mm] 45  
 M × g2 M4 × 4.5  
 Ø [mm] 1.8  
 S [mm] 3.3  
 T [mm] 4.5

### Forces and Torques

Basic Load Ratings C [N] 6725  
 Basic Load Ratings C0 [N] 12580  
 Static Moment Ratings-Ma [N-m] 257.6  
 Static Moment Ratings-Mb [N-m] 93.1  
 Static Moment Ratings-Mc [N-m] 93.1

### Weight

Weight-Block [g] 203