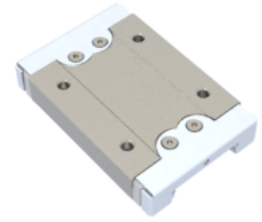
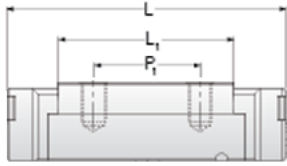


NMR 12WL SUE

Call 800-321-7800 or visit us online at www.nookindustries.com to configure and order your NMR 12WL SUE today!



Details

Size [mm] 12

Dimensions

W [mm] 40
 L [mm] 60.8
 L1 [mm] 46
 h2 [mm] 11.2
 P1 [mm] 28
 P2 [mm] 28
 M × g2 M3 × 3.5
 Ø [mm] 1.3
 S [mm] 3.1
 T [mm] 4.5

Forces and Torques

Basic Load Ratings C [N] 4070
 Basic Load Ratings C0 [N] 7800
 Static Moment Ratings-Ma [N-m] 95.6
 Static Moment Ratings-Mb [N-m] 56.4
 Static Moment Ratings-Mc [N-m] 56.4

Weight

Weight-Block [g] 96