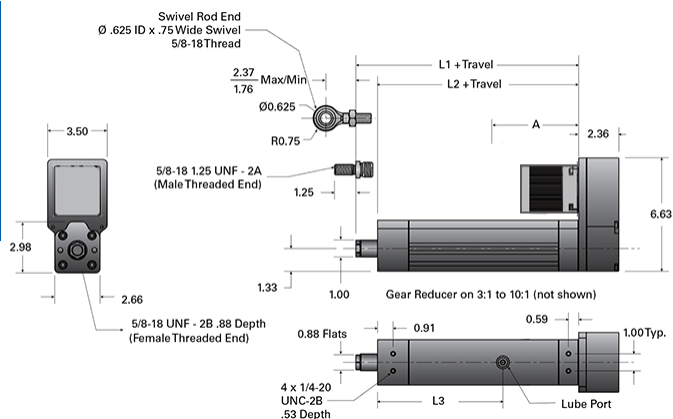
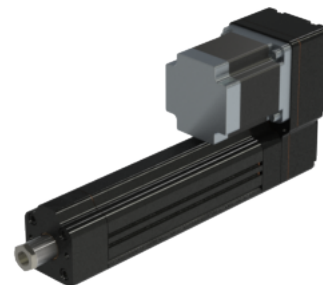


## PA05-P 0750-0500 SRT RA T

Call 800-321-7800 or visit us online at [www.nookindustries.com](http://www.nookindustries.com) to configure and order your PA05-P 0750-0500 SRT RA T today!



### Details

|                           |                  |
|---------------------------|------------------|
| Screw                     | 0750-0500 SRT RA |
| Ball Circle Diameter [in] | 0.750            |
| Screw Lead [in]           | 0.500            |

### Performance Specifications

|  |       |
|--|-------|
| Lead Accuracy +/- [in/in]  | 0.004 |
| Efficiency [%]   | >90   |
| Ball Nut Max Velocity [in/min]   | 2000  |
| Max Capacity [lb]  | 1000  |
| Dynamic Load [lb] (Ball screw L10 life based on 1 mil. Inches of travel) | 2723  |

### Dimensions

|                                  |   |
|----------------------------------|---|
| L1 + Travel [in]                 | 10.10   |
| L2 + Travel [in]                 | 8.83  |
| L3 [in]                          | 8.40  |
| A (w/out Reducer, No Brake) [in] | T23 2.80 / T34 4.96 / T23IP 3.04 / T34IP 5.00 |
| A (w/out Reducer, Brake) [in]    | T23B 4.05 / T34B 6.13                         |
| A (w/Reducer, No Brake) [in]     | T23 6.39                                      |
| A (w/Reducer, Brake) [in]        | T23B 7.64                                     |