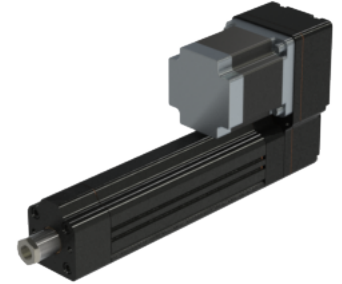
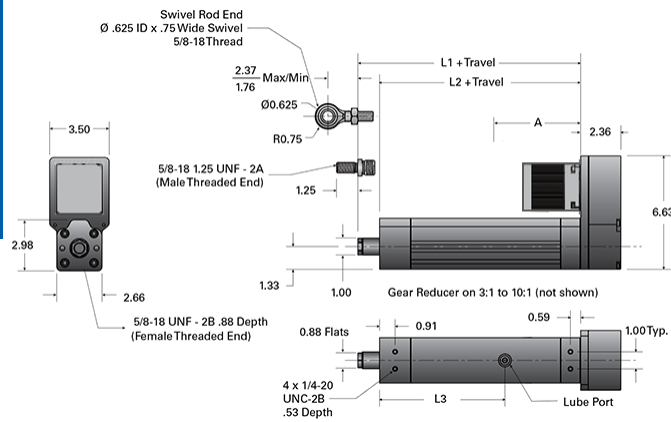


PA05-P 0750-0200 SRT RA T

Call 800-321-7800 or visit us online at www.nookindustries.com to configure and order your PA05-P 0750-0200 SRT RA T today!



Details

Screw	0750-0200 SRT RA
Ball Circle Diameter [in]	0.750
Screw Lead [in]	0.200

Performance Specifications

Lead Accuracy +/- [in/in]	0.004
Efficiency [%]	>90
Ball Nut Max Velocity [in/min]	800
Max Capacity [lb]	1000
Dynamic Load [lb] (Ball screw L10 life based on 1 mil. Inches of travel)	1100

Dimensions

L1 + Travel [in]	9.05
L2 + Travel [in]	7.78
L3 [in]	7.34
A (w/out Reducer, No Brake) [in]	T23 2.80 / T34 4.96 / T23IP 3.04 / T34IP 5.00
A (w/out Reducer, Brake) [in]	T23B 4.05 / T34B 6.13
A (w/Reducer, No Brake) [in]	T23 6.39
A (w/Reducer, Brake) [in]	T23B 7.64