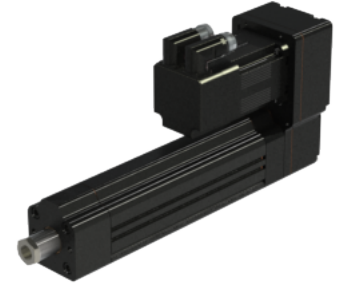
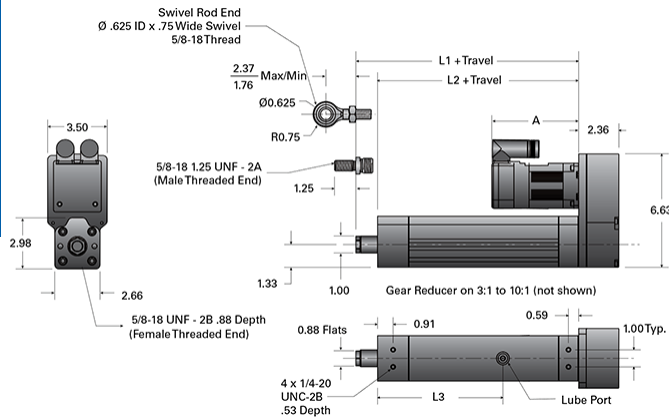


PA05-P 0631-1000 SRT RA V

Call 800-321-7800 or visit us online at www.nookindustries.com to configure and order your PA05-P 0631-1000 SRT RA V today!



Details

Screw	0631-1000 SRT RA
Ball Circle Diameter [in]	0.631
Screw Lead [in]	1.000

Performance Specifications

Lead Accuracy +/- [in/in]	0.004
Efficiency [%]	>90
Ball Nut Max Velocity [in/min]	3000
Max Capacity [lb]	620
Dynamic Load [lb] (Ball screw L10 life based on 1 mil. Inches of travel)	620

Dimensions

L1 + Travel [in]	9.05
L2 + Travel [in]	7.78
L3 [in]	7.34
A (w/out Reducer, No Brake) [in]	5.42
A (w/out Reducer, Brake) [in]	6.96
A (w/Reducer, No Brake) [in]	8.09
A (w/Reducer, Brake) [in]	9.62