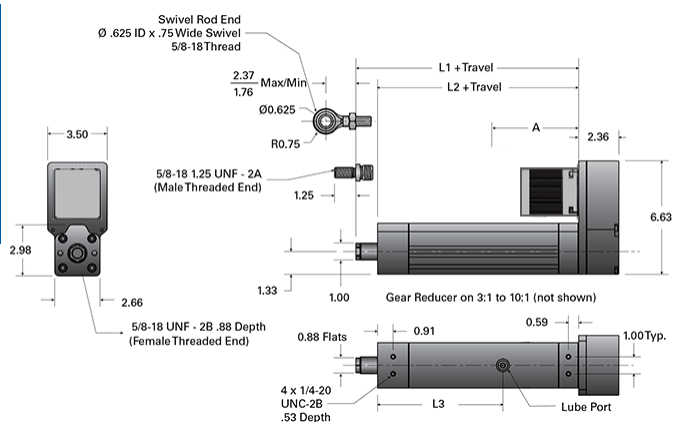
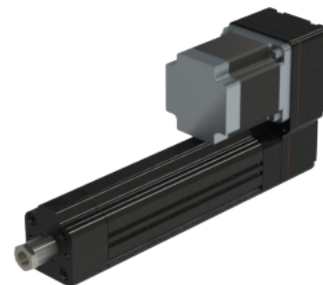


## PA05-P 070-RA T

Call 800-321-7800 or visit us online at [www.nookindustries.com](http://www.nookindustries.com) to configure and order your PA05-P 070-RA T today!



### Details

Screw	3/4-10 RA
Screw Lead [in]	0.100

### Performance Specifications

Lead Accuracy +/- [in/in]	0.0036
Efficiency [%]	25
Max Capacity [lb]	1000

### Dimensions

L1 + Travel [in]	9.05
L2 + Travel [in]	7.78
L3 [in]	7.34
A (w/out Reducer, No Brake) [in]	T23 3.03 / T34 4.96
A (w/out Reducer, Brake) [in]	T23B 4.32 / T34B 6.44
A (w/Reducer, No Brake) [in]	T23 5.49 / T34 8.29
A (w/Reducer, Brake) [in]	T23B 6.78 / T34B 9.77