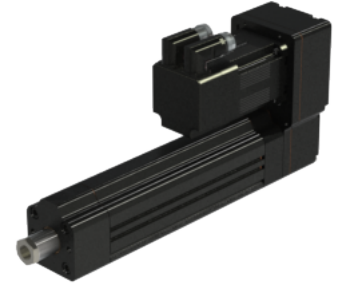
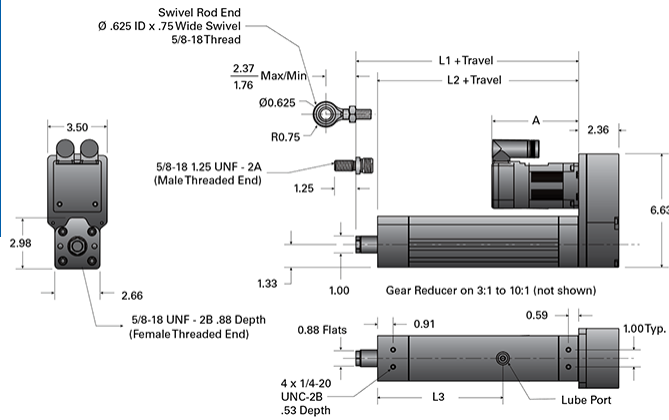


## PA05-P 076-RA V

Call 800-321-7800 or visit us online at [www.nookindustries.com](http://www.nookindustries.com) to configure and order your PA05-P 076-RA V today!



### Details

Screw	3/4-6 RA
Screw Lead [in]	0.166

### Performance Specifications

Lead Accuracy +/- [in/in]	0.0036
Efficiency [%]	36
Max Capacity [lb]	1000

### Dimensions

L1 + Travel [in]	9.05
L2 + Travel [in]	7.78
L3 [in]	7.34
A (w/out Reducer, No Brake) [in]	5.42
A (w/out Reducer, Brake) [in]	6.96
A (w/Reducer, No Brake) [in]	8.09
A (w/Reducer, Brake) [in]	9.62