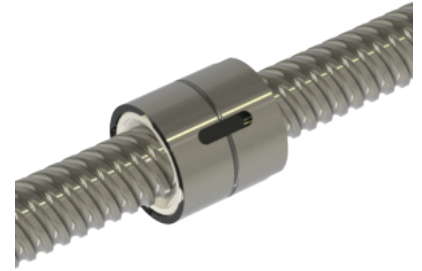
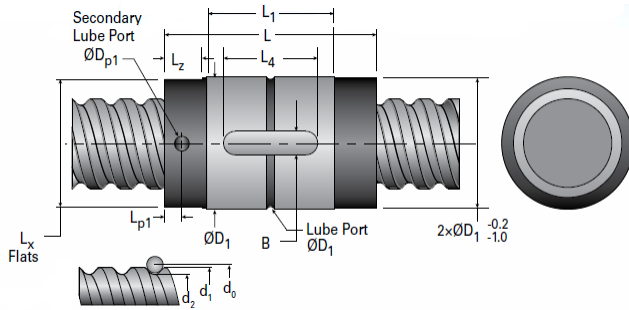


MBN25x25R-4CW

Call 800-321-7800 or visit us online at www.nookindustries.com to configure and order your MBN25x25R-4CW today!



Product Info

Nominal Rod Diameter [mm]	25
Material	Alloy
Thread Direction	RH

Details

Lead [mm]	25
Active Turns	4
Nominal Ball Dia. [mm]	3.500
Screw Weight [kg/m]	3.28
Nut Weight [kg]	0.18
End Code for Types 1,2, and 3	20
End Code for Types 4	12
End Code for Types 5	20
End Code for Types 6	20
End Code for Types 7	20

Performance Specifications

Dynamic Load Ca [N]	13680
Static Load [N]	28500
Linear Speed (Based on DN Values) [mm/min]	70000

Screw Dimensions

d0 [mm]	25
d1 [mm]	24.26
d2 [mm]	21.38

Nut Dimensions

D1 (g6) [mm]	40
L1 [mm]	40
Dp [mm]	1.5
Lp1 [mm]	-
Dp1 [mm]	-
L [mm]	40
Lx [mm]	39
Lz [mm]	5
L4 [mm]	20
B (P9) [mm]	5