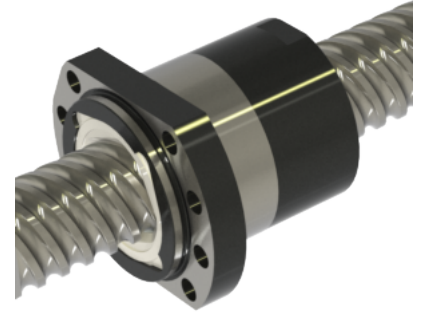
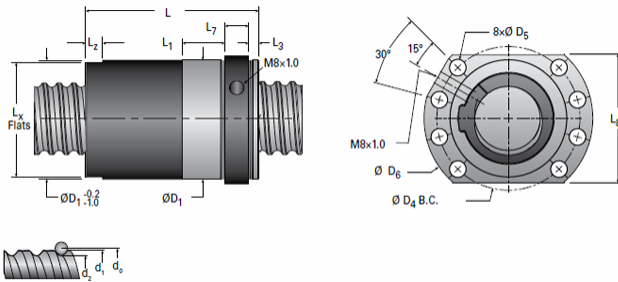


## MBN40X40R-6FW

Call 800-321-7800 or visit us online at [www.nookindustries.com](http://www.nookindustries.com) to configure and order your MBN40X40R-6FW today!



### Product Info

Nominal Rod Diameter [mm]	40
Material	Alloy
Thread Direction	RH

### Details

Lead [mm]	40
Active Turns	6
Nominal Ball Dia. [mm]	6.350
Screw Weight [kg/m]	8.06
Nut Weight [kg]	1.71
Lube Hole Locaton	-
End Code for Types 1,2, and 3	30
End Code for Types 4	19
End Code for Types 5	25
End Code for Types 6	30
End Code for Types 7	30

### Performance Specifications

Dynamic Load Ca [N]	56490
Static Load [N]	129520
Linear Speed (Based on DN Values) [mm/min]	70000

### Screw Dimensions

d0 [mm]	40
d1 [mm]	38.49
d2 [mm]	33.45

### Nut Dimensions

D1 (g6) [mm]	70
L [mm]	82
L1 [mm]	25
Lx [mm]	67
Lz [mm]	10
L3 (min) [mm]	6
L7 [mm]	14
L8 [mm]	75
D4 [mm]	85
D5 [mm]	8 × 9
D6 [mm]	100