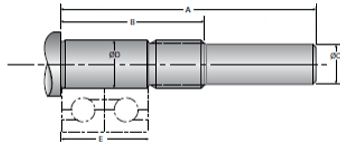


## Type 6L, End Code 20

Call 800-321-7800 or visit us online at [www.nookindustries.com](http://www.nookindustries.com) to configure and order your Type 6L, End Code 20 today!



### Product Info

Nominal Bearing Journal Size

20

### Dimensions

A [mm]

86.5

B [mm]

53.0

C Maximum [MM]

16.00

C Minimum [MM]

15.98

D Maximum [mm]

20.007

D Minimum [mm]

19.994

E [mm]

38.00

Lock Nut

M20 x 1.0