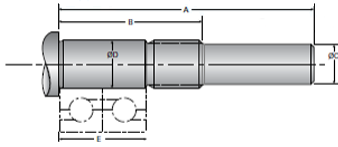


Type 6L, End Code 15

Call 800-321-7800 or visit us online at www.nookindustries.com to configure and order your Type 6L, End Code 15 today!



Product Info

Nominal Bearing Journal Size

15

Dimensions

A [mm]

60.5

B [mm]

40.0

C Maximum [MM]

12.00

C Minimum [MM]

11.98

D Maximum [mm]

15.006

D Minimum [mm]

14.995

E [mm]

28.00

Lock Nut

M15 x 1.0