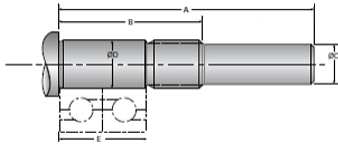


Type 6L, End Code 10

Call 800-321-7800 or visit us online at www.nookindustries.com to configure and order your Type 6L, End Code 10 today!



Product Info

Nominal Bearing Journal Size 10

Dimensions

A [mm]	53.5
B [mm]	36.0
C Maximum [MM]	8.00
C Minimum [MM]	7.98
D Maximum [mm]	10.005
D Minimum [mm]	9.996
E [mm]	20.00
Lock Nut	M10 x 1.0