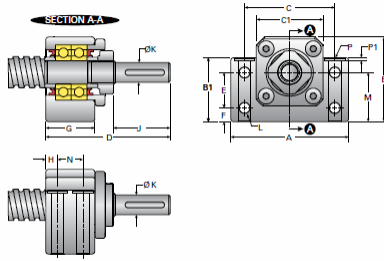


EZBK15-SLB

Call 800-321-7800 or visit us online at www.nookindustries.com to configure and order your EZBK15-SLB today!



Product Info

Part Number	EZBK15-SLB
Machined End Code	15
Nominal Bearing Journal Size [mm]	15
Max Load Limit [kN]	2.36

Dimensions

A [mm]	70
B [mm]	47
B1 [mm]	38.0
C [mm]	54
C1 [mm]	38
D [mm]	60.5
E [mm]	18
F [mm]	10
G [mm]	27
H [mm]	6
J [mm]	20.5
K Shaft Diameter [mm]	12
L Thru [mm]	5.5
M [mm]	28
N [mm]	15
P C'Bore [mm]	10.5
P P1 [mm]	6.5
P - Bolt Size	6
P-Thru [mm]	6.3