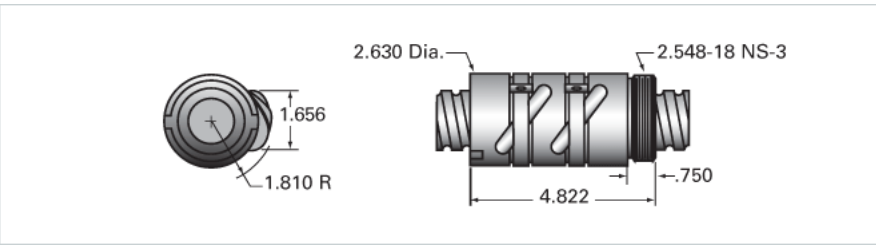
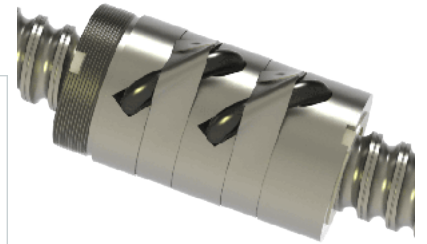


PowerTrac 1500 - 0500 XPR RA, with PRN Ball Nut, Preloaded

Call 800-321-7800 or visit us online at www.nookindustries.com to configure and order your PowerTrac 1500 - 0500 XPR RA, with PRN Ball Nut,



Inch Ball Screw	
(Screw)Product Info	
Screw Code	1500-0500 XPR RA
Precision	XPR
Screw Material	4150
Thread Direction	RH
(Screw)Details	
Ball Circle Diameter [in]	1.500
Lead [in]	0.500
Root Diameter [in]	1.174
End Code for Types 1,2,3,5 [* Journals may show tracings of the thread]	25
End Code for Type 4 [* Journals may show tracings of the thread]	16
(Screw)Performance Specifications	
Lead Accuracy +/- [in./ft.]	0.0010
(Screw)Part Numbers	
2 ft. Part Number	
4 ft. Part Number	
6 ft. Part Number	XPR15050R72
8 ft. Part Number	
12 ft. Part Number	XPR15050R144
16 ft. Part Number	
20 ft. Part Number	
(Screw)Weight	
Screw Weight [lb./ft.]	5.30
Inch Ball Nut, for XPR, Ground Accuracy, Preloaded, Fixed, PRN	
(Nut)Product Info	
Ball Nut Number	PRN10114
Thread Direction	RH
(Nut)Details	
Ball Circle Diameter [in]	1.500
Lead [in]	0.500
Nominal Ball Diameter [in]	0.312
Root diameter [in]	1.174
(Nut)Forces and Torques	
Torque to Raise 1 lb. [in-lb]	0.088
(Nut)Flange Part Numbers	
Flange Part Number	-
(Nut)Wiper Part Numbers	
Wiper Kit Part Number	ELASTOMER
(Nut)Weight	
Nut Weight [lb]	3.50
(Nut)Performance Specifications	
Maximum Adjustable Preload [lb]	
Spring Rate x 10 ⁶ [lb./in.]	5.20
Dynamic Load [lb]	5650
Static Load [lb]	35522