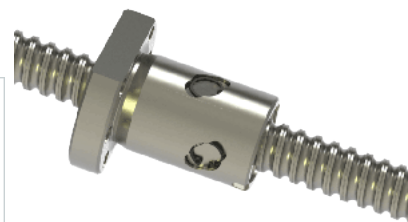
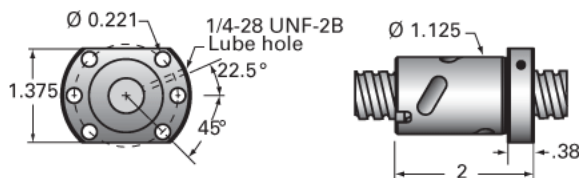


## PowerTrac 0631 - 0200 XPR RA, with SSN Ball Nut, Internal

Call 800-321-7800 or visit us online at [www.nookindustries.com](http://www.nookindustries.com) to configure and order your PowerTrac 0631 - 0200 XPR RA, with SSN Ball Nut, Internal



### Inch Ball Screw

#### (Screw)Product Info

Screw Code	0631-0200 XPR RA
Precision	XPR
Screw Material	4150
Thread Direction	RH

#### (Screw)Details

Ball Circle Diameter [in]	0.631
Lead [in]	0.200
Root Diameter [in]	0.500
End Code for Types 1,2,3,5 [* Journals may show tracings of the thread]	12
End Code for Type 4 [* Journals may show tracings of the thread]	8

#### (Screw)Performance Specifications

Lead Accuracy +/- [in./ft.]	0.0010
-----------------------------	--------

#### (Screw)Part Numbers

2 ft. Part Number	
4 ft. Part Number	XPR6320R48
6 ft. Part Number	XPR6320R72
8 ft. Part Number	
12 ft. Part Number	
16 ft. Part Number	
20 ft. Part Number	

#### (Screw)Weight

Screw Weight [lb./ft.]	0.86
------------------------	------

### Inch Ball Nut, for SGT and XPR, Ground Accuracy, Preloaded, Fixed, SSN

#### (Nut)Product Info

Ball Nut Number	SSN10304
Thread Direction	RH

#### (Nut)Details

Ball Circle Diameter [in]	0.631
Lead [in]	0.200
Nominal Ball Diameter [in]	0.125
Root diameter [in]	0.500

#### (Nut)Forces and Torques

Torque to Raise 1 lb. [in-lb]	0.035
-------------------------------	-------

#### (Nut)Flange Part Numbers

Flange Part Number	INTEGRAL
--------------------	----------

#### (Nut)Wiper Part Numbers

Wiper Kit Part Number	ELASTOMER
-----------------------	-----------

#### (Nut)Weight

Nut Weight [lb]	0.45
-----------------	------

#### (Nut)Performance Specifications

Maximum Adjustable Preload [lb]	
Spring Rate x 10 <sup>6</sup> [lb./in.]	1.50
Dynamic Load [lb]	450
Static Load [lb]	2115