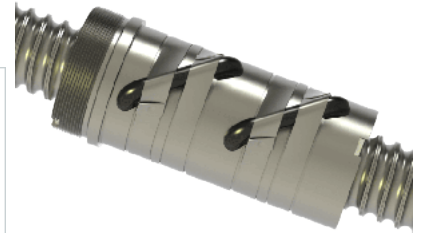
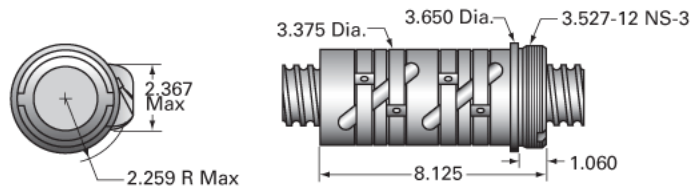


## PowerTrac 2250 - 0500 XPR RA, with PRN Ball Nut, Preloaded

Call 800-321-7800 or visit us online at [www.nookindustries.com](http://www.nookindustries.com) to configure and order your PowerTrac 2250 - 0500 XPR RA, with PRN Ball Nut,



### Inch Ball Screw

#### (Screw)Product Info

Screw Code	2250-0500 XPR RA
Precision	XPR
Screw Material	4150
Thread Direction	RH

#### (Screw)Details

Ball Circle Diameter [in]	2.250
Lead [in]	0.500
Root Diameter [in]	1.850
End Code for Types 1,2,3,5 [* Journals may show tracings of the thread]	45
End Code for Type 4 [* Journals may show tracings of the thread]	28

#### (Screw)Performance Specifications

Lead Accuracy +/- [in./ft.]	0.0010
-----------------------------	--------

#### (Screw)Part Numbers

2 ft. Part Number	
4 ft. Part Number	
6 ft. Part Number	XPR22550R72
8 ft. Part Number	
12 ft. Part Number	XPR22550R144
16 ft. Part Number	
20 ft. Part Number	

#### (Screw)Weight

Screw Weight [lb./ft.]	10.80
------------------------	-------

### Inch Ball Nut, for SGT and XPR, Ground Accuracy, Preloaded, Fixed, PRN

#### (Nut)Product Info

Ball Nut Number	PRN10089
Thread Direction	RH

#### (Nut)Details

Ball Circle Diameter [in]	2.250
Lead [in]	0.500
Nominal Ball Diameter [in]	0.375
Root diameter [in]	0.375

#### (Nut)Forces and Torques

Torque to Raise 1 lb. [in-lb]	0.088
-------------------------------	-------

#### (Nut)Flange Part Numbers

Flange Part Number	-
--------------------	---

#### (Nut)Wiper Part Numbers

Wiper Kit Part Number	ELASTOMER
-----------------------	-----------

#### (Nut)Weight

Nut Weight [lb]	10.50
-----------------	-------

#### (Nut)Performance Specifications

Maximum Adjustable Preload [lb]	
Spring Rate x 10 <sup>6</sup> [lb./in.]	7.25
Dynamic Load [lb]	20106
Static Load [lb]	108325