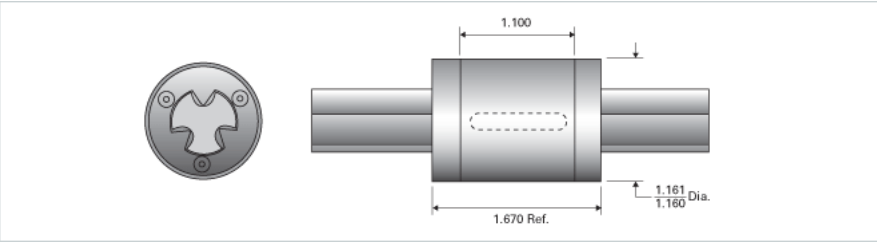


PowerTorq 0375-3-0156 HPR6900

Call 800-321-7800 or visit us online at www.nookindustries.com to configure and order your PowerTorq 0375-3-0156 HPR6900 today!



Inch Ball Spline Inner Race	
(Inch Ball Spline Inner Race(1))Product Info	
Nominal Diameter [in]	0.375
(Inch Ball Spline Inner Race(1))Details	
Active Circuits	3
Root Diameter [in]	0.20
(Inch Ball Spline Inner Race(1))Part Numbers	
12 ft. Part Number	
2 ft. Part Number	SRR7547
4 ft. Part Number	
6 ft. Part Number	
8 ft. Part Number	
(Inch Ball Spline Inner Race(1))Weight	
Inner Race Weight [lb./ft.]	0.31
Inch High Performance Ball Spline Outer Race	
(Inch High Performance Ball Spline Outer Race(2))Product Info	
Part Number	HPR6900
Nominal Diameter [in]	0.375
(Inch High Performance Ball Spline Outer Race(2))Details	
Active Circuits	3
Nominal Ball Diameter [in]	0.156
Optional Keyway	3/16x3/32x1.00
Ball Return	Cast
Balls per Outer Race	54
(Inch High Performance Ball Spline Outer Race(2))Weight	
Outer Race Weight [lb]	0.32
(Inch High Performance Ball Spline Outer Race(2))Performance Specifications	
Dynamic Torque [in-lb]	200
Static Torque [in-lb]	626