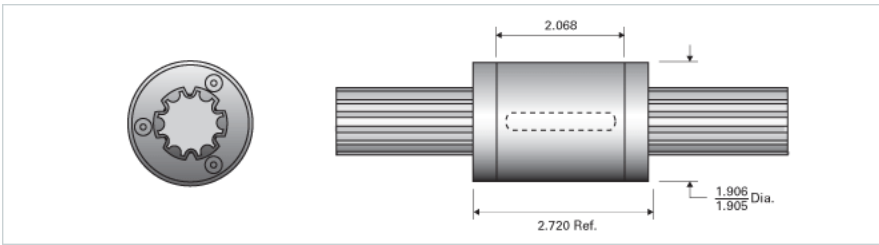
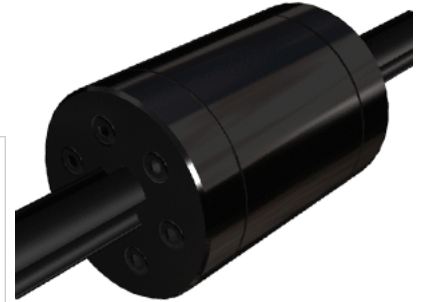


PowerTorq 1000-6-0187 HPR8944

Call 800-321-7800 or visit us online at www.nookindustries.com to configure and order your PowerTorq 1000-6-0187 HPR8944 today!



Inch Ball Spline Inner Race	
(Inch Ball Spline Inner Race(1))Product Info	
Nominal Diameter [in]	1.000
(Inch Ball Spline Inner Race(1))Details	
Active Circuits	6
Root Diameter [in]	0.80
(Inch Ball Spline Inner Race(1))Part Numbers	
12 ft. Part Number	SRR6084
2 ft. Part Number	
4 ft. Part Number	SRR6068
6 ft. Part Number	
8 ft. Part Number	SRR6076
(Inch Ball Spline Inner Race(1))Weight	
Inner Race Weight [lb./ft.]	2.2
Inch High Performance Ball Spline Outer Race	
(Inch High Performance Ball Spline Outer Race(2))Product Info	
Part Number	HPR8944
Nominal Diameter [in]	1.000
(Inch High Performance Ball Spline Outer Race(2))Details	
Active Circuits	6
Nominal Ball Diameter [in]	0.188
Optional Keyway	1/4x1/8x1.625
Ball Return	Cast
Balls per Outer Race	156
(Inch High Performance Ball Spline Outer Race(2))Weight	
Outer Race Weight [lb]	1.48
(Inch High Performance Ball Spline Outer Race(2))Performance Specifications	
Dynamic Torque [in-lb]	2600
Static Torque [in-lb]	7800