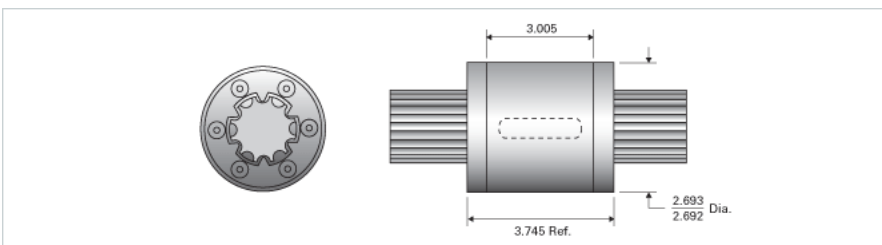


## PowerTorq 1500-6-0250 HPR8945

Call 800-321-7800 or visit us online at [www.nookindustries.com](http://www.nookindustries.com) to configure and order your PowerTorq 1500-6-0250 HPR8945 today!



<b>Inch Ball Spline Inner Race</b>	
<b>(Inch Ball Spline Inner Race(1))Product Info</b>	
Nominal Diameter [in]	1.500
<b>(Inch Ball Spline Inner Race(1))Details</b>	
Active Circuits	6
Root Diameter [in]	1.25
<b>(Inch Ball Spline Inner Race(1))Part Numbers</b>	
12 ft. Part Number	SRR6388
2 ft. Part Number	
4 ft. Part Number	SRR6372
6 ft. Part Number	
8 ft. Part Number	SRR6380
<b>(Inch Ball Spline Inner Race(1))Weight</b>	
Inner Race Weight [lb./ft.]	5.25
<b>Inch High Performance Ball Spline Outer Race</b>	
<b>(Inch High Performance Ball Spline Outer Race(2))Product Info</b>	
Part Number	HPR8945
Nominal Diameter [in]	1.500
<b>(Inch High Performance Ball Spline Outer Race(2))Details</b>	
Active Circuits	6
Nominal Ball Diameter [in]	0.250
Optional Keyway	3/8x3/16x2.00
Ball Return	Cast
Balls per Outer Race	168
<b>(Inch High Performance Ball Spline Outer Race(2))Weight</b>	
Outer Race Weight [lb]	4.00
<b>(Inch High Performance Ball Spline Outer Race(2))Performance Specifications</b>	
Dynamic Torque [in-lb]	8400
Static Torque [in-lb]	23170