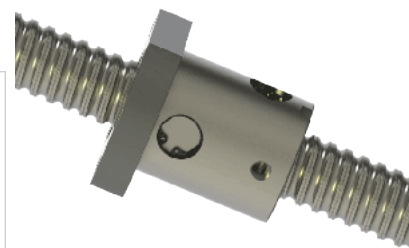
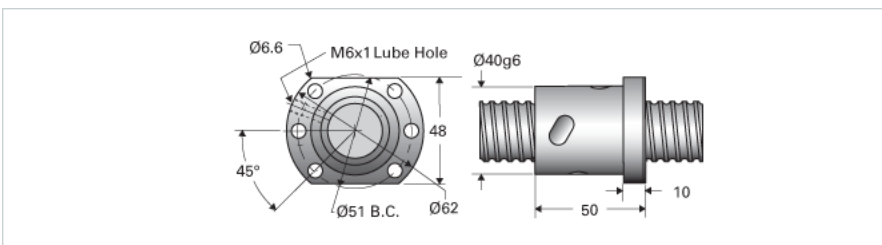


PowerTrac PMT 25 x 5 RH with MPN Ball Nut

Call 800-321-7800 or visit us online at www.nookindustries.com to configure and order your PowerTrac PMT 25 x 5 RH with MPN Ball Nut today!



Metric Ball Screw

(Screw)Product Info

Screw Code	25x5 PMT RA
Precision	PMT
Screw Material	4150
Thread Direction	RH

(Screw)Details

Screw Part Number	25x5 PMT
Ball Circle Diameter [mm]	25.75
Lead [mm]	5
Root Diameter [mm]	22.60
End Code for Types 1,2,3,5 [* Journals may show tracings of the thread]	20
End Code for Type 4 [* Journals may show tracings of the thread]	12

(Screw)Weight

Screw Weight [g/M]	3452
--------------------	------

(Screw)Performance Specifications

Lead Accuracy +/- [#956;m/300mm]	25
----------------------------------	----

Metric Ball Nut, for PMT, Preloaded, Precision Accuracy, MPN

(Nut)Product Info

Ball Nut Number	MPN10333
Thread Direction	RH

(Nut)Details

Ball Circle Diameter [mm]	25.75
Lead [mm]	5
Nominal Ball Diameter [mm]	3.18
Root Diameter [mm]	22.60

(Nut)Forces and Torques

Torque to Raise 1 kN [Nm]	0.88
---------------------------	------

(Nut)Flange Part Numbers

Flange Part Number	INTEGRAL
--------------------	----------

(Nut)Wiper Part Numbers

Wiper Kit Part Number	ELASTOMER
-----------------------	-----------

(Nut)Weight

Nut Weight [g]	340
----------------	-----

(Nut)Performance Specifications

Lead Accuracy +/- [#956;m/300mm]	25
Spring Rate x 10 ⁶ [lb./in.]	0.35
Dynamic Load Ca [kN]	8.4
Static Load Coa [kN]	15.7