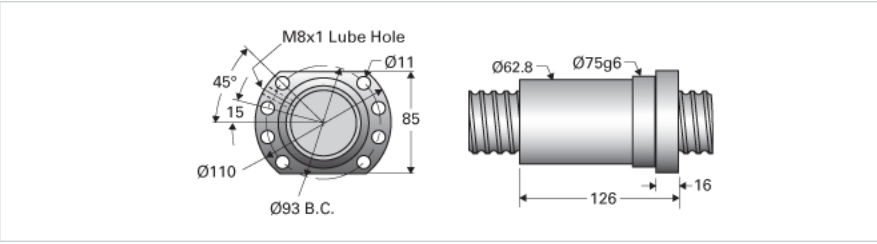
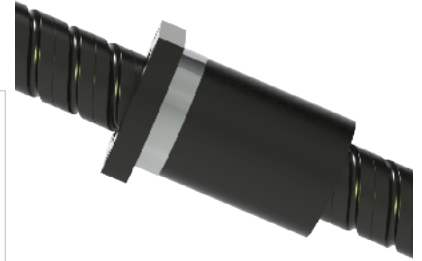


PowerTrac MRT 50 x 50 RH with MBN Ball Nut

Call 800-321-7800 or visit us online at www.nookindustries.com to configure and order your PowerTrac MRT 50 x 50 RH with MBN Ball Nut today!



Metric Ball Screw

(Screw)Product Info

Screw Code	50x50 MRT RA
Precision	MRT
Screw Material	4150
Thread Direction	RH

(Screw)Details

Screw Part Number	50x50 MRT
Ball Circle Diameter [mm]	49.5
Lead [mm]	50
Root Diameter [mm]	43.02
End Code for Types 1,2,3,5 [* Journals may show tracings of the thread]	40
End Code for Type 4 [* Journals may show tracings of the thread]	24

(Screw)Weight

Screw Weight [g/m]	13900
--------------------	-------

(Screw)Performance Specifications

Lead Accuracy +/- [± 956 ;m/300mm]	100
---	-----

Metric Ball Nut, for MRT, No Preload, Standard Accuracy, MBN

(Nut)Product Info

Ball Nut Number	MPN10432
Thread Direction	RH

(Nut)Details

Ball Circle Diameter [mm]	49.5
Lead [mm]	50
Nominal Ball Diameter [mm]	6.35
Root Diameter [mm]	43.02

(Nut)Forces and Torques

Torque to Raise 1 kN [Nm]	7.08
---------------------------	------

(Nut)Flange Part Numbers

Flange Part Number	INTEGRAL
--------------------	----------

(Nut)Wiper Part Numbers

Wiper Kit Part Number	PLASTIC
-----------------------	---------

(Nut)Weight

Nut Weight [g]	2950
----------------	------

(Nut)Performance Specifications

Lead Accuracy +/- [± 956 ;m/300mm]	100
Dynamic Load Ca [kN]	92.6
Static Load Coa [kN]	152.4