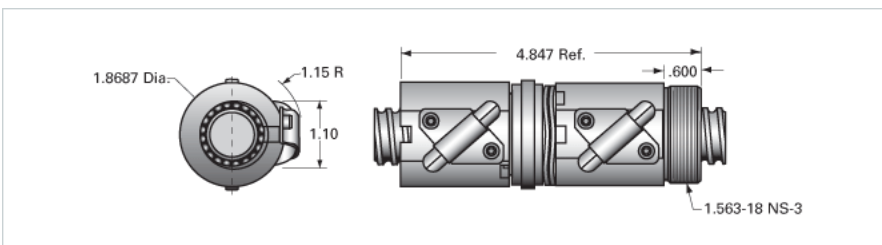


PowerTrac 1000 - 0250 SRT RA, with SEL Ball Nut, Adjustable

Call 800-321-7800 or visit us online at www.nookindustries.com to configure and order your PowerTrac 1000 - 0250 SRT RA, with SEL Ball Nut,



Inch Ball Screw	
(Screw)Product Info	
Screw Code	1000-0250 SRT RA
Precision	SRT
Screw Material	4150
Thread Direction	RH
(Screw)Details	
Ball Circle Diameter [in]	1.000
Lead [in]	0.250
Root Diameter [in]	0.820
End Code for Types 1,2,3,5 [* Journals may show tracings of the thread]	20
End Code for Type 4 [* Journals may show tracings of the thread]	12
(Screw)Performance Specifications	
Lead Accuracy +/- [in./ft.]	0.0040
(Screw)Part Numbers	
2 ft. Part Number	
4 ft. Part Number	SRT5005
6 ft. Part Number	
8 ft. Part Number	SRT5013
12 ft. Part Number	SRT5021
16 ft. Part Number	SRT0426
20 ft. Part Number	
(Screw)Weight	
Screw Weight [lb./ft.]	2.20
Inch Ball Nut, for SRT, Standard Accuracy, Preloaded, Adjustable, SEL	
(Nut)Product Info	
Ball Nut Number	SEL10474
Thread Direction	RH
(Nut)Details	
Ball Circle Diameter [in]	1.000
Lead [in]	0.250
Nominal Ball Diameter [in]	0.156
Root diameter [in]	0.820
(Nut)Forces and Torques	
Torque to Raise 1 lb. [in-lb]	0.044
(Nut)Flange Part Numbers	
Flange Part Number	FLG7571
(Nut)Wiper Part Numbers	
Wiper Kit Part Number	WKB1050
(Nut)Weight	
Nut Weight [lb]	1.90
(Nut)Performance Specifications	
Lead Accuracy +/- [in./ft.]	0.004
Maximum Adjustable Preload [lb]	330
Spring Rate x 10 ⁶ [lb./in.]	
Dynamic Load [lb]	1612
Static Load [lb]	13913