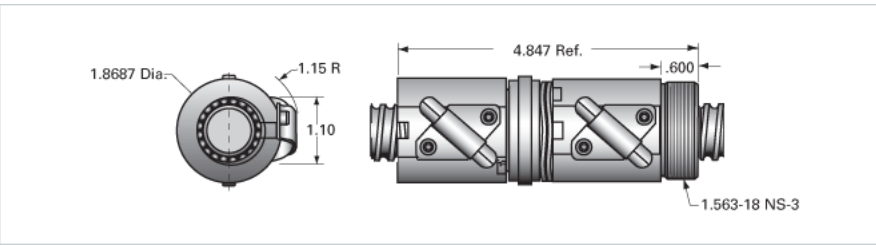


## PowerTrac 1000 - 0250 SRT LA, with SEL Ball Nut, Adjustable

Call 800-321-7800 or visit us online at [www.nookindustries.com](http://www.nookindustries.com) to configure and order your PowerTrac 1000 - 0250 SRT LA, with SEL Ball Nut,



<b>Inch Ball Screw</b>	
<b>(Screw)Product Info</b>	
Screw Code	1000-0250 SRT LA
Precision	SRT
Screw Material	4150
Thread Direction	LH
<b>(Screw)Details</b>	
Ball Circle Diameter [in]	1.000
Lead [in]	0.250
Root Diameter [in]	0.820
End Code for Types 1,2,3,5 [* Journals may show tracings of the thread]	20
End Code for Type 4 [* Journals may show tracings of the thread]	12
<b>(Screw)Performance Specifications</b>	
Lead Accuracy +/- [in./ft.]	0.0040
<b>(Screw)Part Numbers</b>	
2 ft. Part Number	
4 ft. Part Number	SRT5499
6 ft. Part Number	
8 ft. Part Number	SRT5507
12 ft. Part Number	SRT5515
16 ft. Part Number	SRT0428
20 ft. Part Number	
<b>(Screw)Weight</b>	
Screw Weight [lb./ft.]	2.20
<b>Inch Ball Nut, for SRT, Standard Accuracy, Preloaded, Adjustable, SEL</b>	
<b>(Nut)Product Info</b>	
Ball Nut Number	SEL10477
Thread Direction	LH
<b>(Nut)Details</b>	
Ball Circle Diameter [in]	1.000
Lead [in]	0.250
Nominal Ball Diameter [in]	0.156
Root diameter [in]	0.820
<b>(Nut)Forces and Torques</b>	
Torque to Raise 1 lb. [in-lb]	0.044
<b>(Nut)Flange Part Numbers</b>	
Flange Part Number	FLG7571
<b>(Nut)Wiper Part Numbers</b>	
Wiper Kit Part Number	WKB1050
<b>(Nut)Weight</b>	
Nut Weight [lb]	1.90
<b>(Nut)Performance Specifications</b>	
Lead Accuracy +/- [in./ft.]	0.004
Maximum Adjustable Preload [lb]	330
Spring Rate x 10 <sup>6</sup> [lb./in.]	
Dynamic Load [lb]	1612
Static Load [lb]	13913