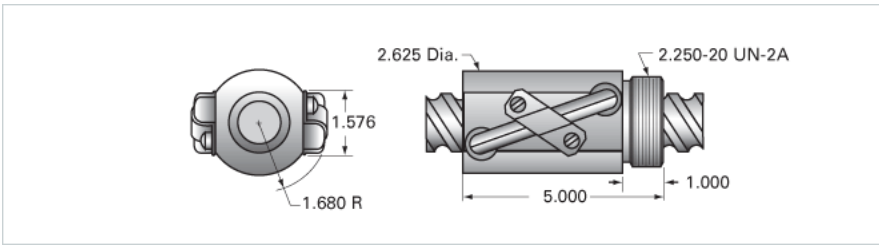


## PowerTrac 1500 - 1875 SRT RA, with SBN Ball Nut, Double Circuit

Call 800-321-7800 or visit us online at [www.nookindustries.com](http://www.nookindustries.com) to configure and order your PowerTrac 1500 - 1875 SRT RA, with SBN Ball Nut, Double



<b>Inch Ball Screw</b>	
<b>(Screw)Product Info</b>	
Screw Code	1500-1875 SRT RA
Precision	SRT
Screw Material	4150
Thread Direction	RH
<b>(Screw)Details</b>	
Ball Circle Diameter [in]	1.500
Lead [in]	1.875
Root Diameter [in]	1.188
End Code for Types 1,2,3,5 [* Journals may show tracings of the thread]	30
End Code for Type 4 [* Journals may show tracings of the thread]	19
<b>(Screw)Performance Specifications</b>	
Lead Accuracy +/- [in./ft.]	0.0040
<b>(Screw)Part Numbers</b>	
2 ft. Part Number	
4 ft. Part Number	SRT7702
6 ft. Part Number	
8 ft. Part Number	SRT7710
12 ft. Part Number	SRT7718
16 ft. Part Number	SRT0438
20 ft. Part Number	SRT0599
<b>(Screw)Weight</b>	
Screw Weight [lb./ft.]	5.25
<b>Inch Ball Nut, for SRT, Standard Accuracy, No Preload, SBN, Standard</b>	
<b>(Nut)Product Info</b>	
Ball Nut Number	SBN7654
Thread Direction	RH
<b>(Nut)Details</b>	
Ball Circle Diameter [in]	1.500
Lead [in]	1.875
Nominal Ball Diameter [in]	0.281
Root diameter [in]	1.188
<b>(Nut)Dimensions</b>	
A [in]	
<b>(Nut)Forces and Torques</b>	
Torque to Raise 1 lb. [in-lb]	0.332
<b>(Nut)Flange Part Numbers</b>	
Flange Part Number	FLG7777
<b>(Nut)Wiper Part Numbers</b>	
Wiper Kit Part Number	WKB2657
Wiper Kit Felt Part Number	
<b>(Nut)Weight</b>	
Nut Weight [lb]	4.20
<b>(Nut)Performance Specifications</b>	
Lead Accuracy +/- [in./ft.]	0.004
Maximum Adjustable Preload [lb]	
Spring Rate x 10 <sup>6</sup> [lb./in.]	
Dynamic Load [lb]	7242
Static Load [lb]	29895