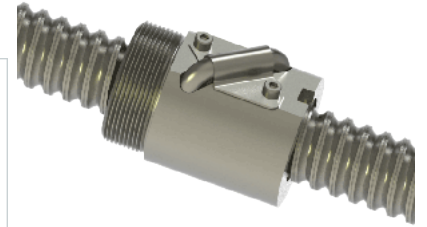
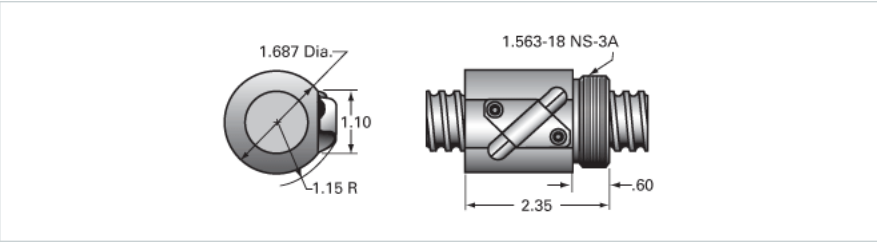


PowerTrac 1000 - 0250 SRT RS, with SBN Ball Nut, Stainless Steel,

Call 800-321-7800 or visit us online at www.nookindustries.com to configure and order your PowerTrac 1000 - 0250 SRT RS, with SBN Ball Nut,



Inch Ball Screw

(Screw)Product Info

Screw Code	1000-0250 SRT RS
Precision	SRT
Screw Material	17-4 PH Stainless
Thread Direction	RH

(Screw)Details

Ball Circle Diameter [in]	1.000
Lead [in]	0.250
Root Diameter [in]	0.820
End Code for Types 1,2,3,5 [* Journals may show tracings of the thread]	20
End Code for Type 4 [* Journals may show tracings of the thread]	12

(Screw)Performance Specifications

Lead Accuracy +/- [in./ft.]	0.0040
-----------------------------	--------

(Screw)Part Numbers

2 ft. Part Number	
4 ft. Part Number	SRT6668
6 ft. Part Number	
8 ft. Part Number	SRT6676
12 ft. Part Number	SRT6684
16 ft. Part Number	
20 ft. Part Number	

(Screw)Weight

Screw Weight [lb./ft.]	2.20
------------------------	------

Inch Ball Nut, for SRT, Standard Accuracy, No Preload, SBN, Stainless Steel

(Nut)Product Info

Ball Nut Number	SBN10470
Thread Direction	RH

(Nut)Details

Ball Circle Diameter [in]	1.000
Lead [in]	0.250
Nominal Ball Diameter [in]	0.156
Root diameter [in]	0.820

(Nut)Forces and Torques

Torque to Raise 1 lb. [in-lb]	0.044
-------------------------------	-------

(Nut)Flange Part Numbers

Flange Part Number	-
--------------------	---

(Nut)Wiper Part Numbers

Wiper Kit Part Number	WKB1050
-----------------------	---------

(Nut)Weight

Nut Weight [lb]	0.80
-----------------	------

(Nut)Performance Specifications

Lead Accuracy +/- [in./ft.]	0.004
Maximum Adjustable Preload [lb]	
Spring Rate x 10 ⁶ [lb./in.]	
Dynamic Load [lb]	290
Static Load [lb]	2504