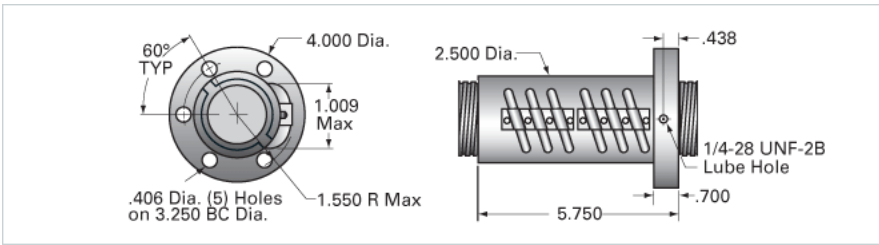
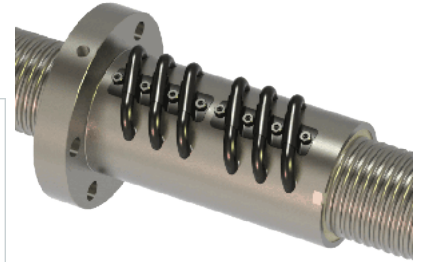


PowerTrac 2000 - 0200 SGT LA, with SSN Ball Nut, Preloaded,

Call 800-321-7800 or visit us online at www.nookindustries.com to configure and order your PowerTrac 2000 - 0200 SGT LA, with SSN Ball Nut,



| Inch Ball Screw | |
|---|------------------|
| (Screw)Product Info | |
| Screw Code | 2000-0200 SGT LA |
| Precision | SGT |
| Screw Material | 4150 |
| Thread Direction | LH |
| (Screw)Details | |
| Ball Circle Diameter [in] | 2.000 |
| Lead [in] | 0.200 |
| Root Diameter [in] | 1.849 |
| End Code for Types 1,2,3,5 [* Journals may show tracings of the thread] | 45 |
| End Code for Type 4 [* Journals may show tracings of the thread] | 28 |
| (Screw)Performance Specifications | |
| Lead Accuracy +/- [in./ft.] | 0.0005 |
| (Screw)Part Numbers | |
| 2 ft. Part Number | |
| 4 ft. Part Number | |
| 6 ft. Part Number | |
| 8 ft. Part Number | GT20020L48 |
| 12 ft. Part Number | |
| 16 ft. Part Number | |
| 20 ft. Part Number | |
| (Screw)Weight | |
| Screw Weight [lb./ft.] | 9.90 |
| Inch Ball Nut, for SGT and XPR, Ground Accuracy, Preloaded, Fixed, SSN | |
| (Nut)Product Info | |
| Ball Nut Number | SSN10267 |
| Thread Direction | LH |
| (Nut)Details | |
| Ball Circle Diameter [in] | 2.000 |
| Lead [in] | 0.200 |
| Nominal Ball Diameter [in] | 0.141 |
| Root diameter [in] | 1.849 |
| (Nut)Forces and Torques | |
| Torque to Raise 1 lb. [in-lb] | 0.035 |
| (Nut)Flange Part Numbers | |
| Flange Part Number | INTEGRAL |
| (Nut)Wiper Part Numbers | |
| Wiper Kit Part Number | ELASTOMER |
| (Nut)Weight | |
| Nut Weight [lb] | 4.50 |
| (Nut)Performance Specifications | |
| Maximum Adjustable Preload [lb] | |
| Spring Rate x 10 ⁶ [lb./in.] | 6.50 |
| Dynamic Load [lb] | 6181 |
| Static Load [lb] | 65903 |