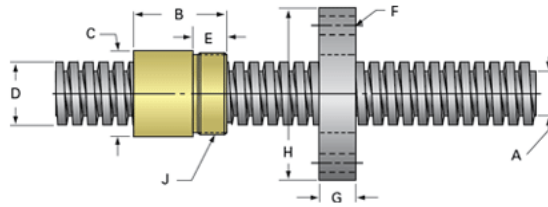
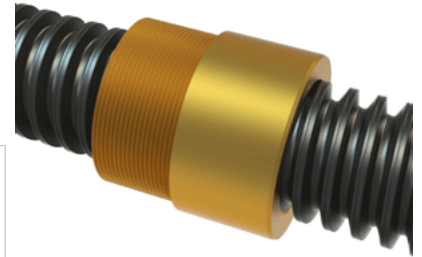


## PowerAC Trapezoidal Assembly 907 RA w/Bronze Nut

Call 800-321-7800 or visit us online at [www.nookindustries.com](http://www.nookindustries.com) to configure and order your PowerAC Trapezoidal Assembly 907 RA w/Bronze Nut



### Trapezoidal Lead Screw (Screw)Product Info

Screw Code	907 RA
Screw Material	4140 Series
Thread Direction	RH

### (Screw)Details

Diameter	65
Lead	12
Starts	1
Pitch [mm]	12
Lead Accuracy +/- [ $\mu$ m/25mm]	6.25
Thread Code	907
End Code for Types 1,2,3,5 [* Journals may show tracings of the thread]	45
End Code for Type 4 [* Journals may show tracings of the thread]	28

### (Screw)Dimensions

A - Root Diameter Minimum [mm]	50.20
D - Nominal Rod Diameter	65

### (Screw)Part Numbers

1800 mm Part Number	15907
3600 mm Part Number	16907
900 mm Part Number	14907

### (Screw)Weight

Weight Per Meter [kg]	21.3
-----------------------	------

### Trapezoidal Lead Nut

#### (Nut)Product Info

Part Number	20907
Thread Direction	RH
Type	Bronze

#### (Nut)Details

Diameter	65
Lead [mm]	12
Starts	1
Pitch [mm]	12
Lash (Maximum Axial in) [mm]	0.42
Nominal Rod Diameter	65
Thread Code	907

#### (Nut)Dimensions

B [mm]	85.0
C [mm]	85.0
E [mm]	35.00
F (n) Dia. [mm]	(4) 17.00
F BCD [mm]	120.00
G [mm]	36.0
H [mm]	150.0
J [mm]	M80x2

#### (Nut)Forces and Torques

Torque to Raise 1 kN [Nm]	5.775
---------------------------	-------

#### (Nut)Flange Part Numbers

Flange Part Number	72007
--------------------	-------

#### (Nut)Weight

Flange Weight [kg]	3.30
Nut Weight [g]	2100

#### (Nut)Performance Specifications

Efficiency [%]	33
Lead Accuracy +/- [ $\mu$ m/25mm]	6.25
Dynamic Load Capacity [N]	145651
Static Load Capacity [N]	466084