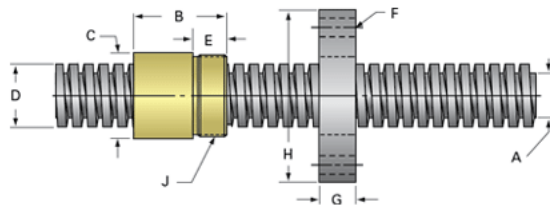
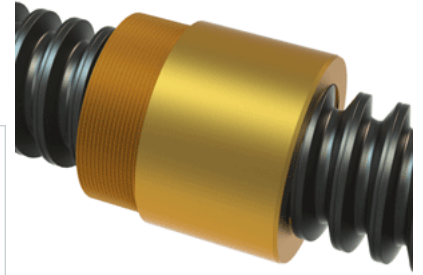


PowerAC Trapezoidal Assembly 906 RA w/Bronze Nut

Call 800-321-7800 or visit us online at www.nookindustries.com to configure and order your PowerAC Trapezoidal Assembly 906 RA w/Bronze Nut



Trapezoidal Lead Screw (Screw)Product Info

Screw Code	906 RA
Screw Material	4140 Series
Thread Direction	RH

(Screw)Details

Diameter	55
Lead	12
Starts	1
Pitch [mm]	12
Lead Accuracy +/- [μ m/25mm]	6.25
Thread Code	906
End Code for Types 1,2,3,5 [* Journals may show tracings of the thread]	30
End Code for Type 4 [* Journals may show tracings of the thread]	19

(Screw)Dimensions

A - Root Diameter Minimum [mm]	40.00
D - Nominal Rod Diameter	55

(Screw)Part Numbers

1800 mm Part Number	15906
3600 mm Part Number	16906
900 mm Part Number	14906

(Screw)Weight

Weight Per Meter [kg]	14.7
-----------------------	------

Trapezoidal Lead Nut

(Nut)Product Info

Part Number	20906
Thread Direction	RH
Type	Bronze

(Nut)Details

Diameter	55
Lead [mm]	12
Starts	1
Pitch [mm]	12
Lash (Maximum Axial in) [mm]	0.42
Nominal Rod Diameter	55
Thread Code	906

(Nut)Dimensions

B [mm]	75.0
C [mm]	80.0
E [mm]	25.00
F (n) Dia. [mm]	(4) 17.00
F BCD [mm]	112.00
G [mm]	26.0
H [mm]	142.0
J [mm]	M72x2

(Nut)Forces and Torques

Torque to Raise 1 kN [Nm]	5.131
---------------------------	-------

(Nut)Flange Part Numbers

Flange Part Number	72006
--------------------	-------

(Nut)Weight

Flange Weight [kg]	2.20
Nut Weight [g]	1900

(Nut)Performance Specifications

Efficiency [%]	37
Lead Accuracy +/- [μ m/25mm]	6.25
Dynamic Load Capacity [N]	104287
Static Load Capacity [N]	333718