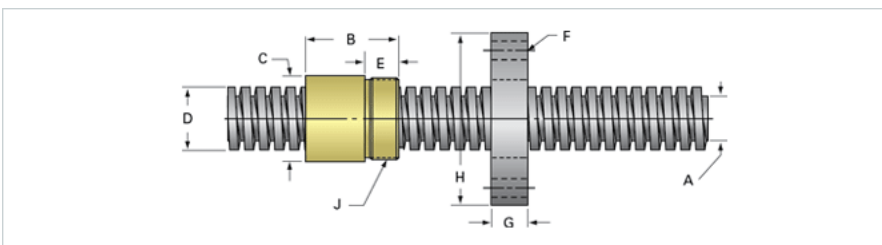
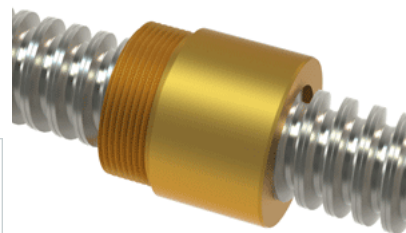


## PowerAC Trapezoidal Assembly 904 RS w/Bronze Nut

Call 800-321-7800 or visit us online at [www.nookindustries.com](http://www.nookindustries.com) to configure and order your PowerAC Trapezoidal Assembly 904 RS w/Bronze Nut



<b>Trapezoidal Lead Screw</b>	
<b>(Screw)Product Info</b>	
Screw Code	904 RS
Screw Material	300 Series Stainless
Thread Direction	RH
<b>(Screw)Details</b>	
Diameter	26
Lead	6
Starts	1
Pitch [mm]	6
Lead Accuracy +/- [ $\mu$ m/25mm]	6.25
Thread Code	904
End Code for Types 1,2,3,5 [* Journals may show tracings of the thread]	17
End Code for Type 4 [* Journals may show tracings of the thread]	10
<b>(Screw)Dimensions</b>	
A - Root Diameter Mmmimum [mm]	17.84
D - Nominal Rod Diameter	26
<b>(Screw)Part Numbers</b>	
1800 mm Part Number	55904
3600 mm Part Number	56904
900 mm Part Number	54904
<b>(Screw)Weight</b>	
Weight Per Meter [kg]	3.2
<b>Trapezoidal Lead Nut</b>	
<b>(Nut)Product Info</b>	
Part Number	20904
Thread Direction	RH
Type	Bronze
<b>(Nut)Details</b>	
Diameter	26
Lead [mm]	6
Starts	1
Pitch [mm]	6
Lash (Maximum Axial in) [mm]	0.30
Nominal Rod Diameter	26
Thread Code	904
<b>(Nut)Dimensions</b>	
B [mm]	45.0
C [mm]	45.0
E [mm]	15.00
F (n) Dia. [mm]	(4) 7.00
F BCD [mm]	70.00
G [mm]	16.0
H [mm]	85.0
J [mm]	M40x15
<b>(Nut)Forces and Torques</b>	
Torque to Raise 1 kN [Nm]	2.469
<b>(Nut)Flange Part Numbers</b>	
Flange Part Number	72004
<b>(Nut)Weight</b>	
Flange Weight [kg]	0.54
Nut Weight [g]	440
<b>(Nut)Performance Specifications</b>	
Efficiency [%]	39
Lead Accuracy +/- [ $\mu$ m/25mm]	6.25
Dynamic Load Capacity [N]	23304
Static Load Capacity [N]	74573