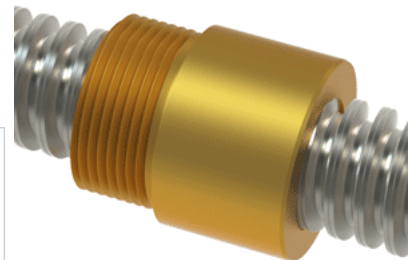


PowerAC 3/4"-6 RS w/Bronze Nut

Call 800-321-7800 or visit us online at www.nookindustries.com to configure and order your PowerAC 3/4"-6 RS w/Bronze Nut today!



Rolled Inch Acme Screw	
(Screw)Product Info	
Screw Code	076-RS
Thread Direction	RH
Screw Material	300 Series Stainless
(Screw)Details	
Lead [in]	0.166
Starts	1
Pitch [in]	0.166
Turns Per Inch	6
Threads per Inch	6
Thread Code	076
Form	2C
End Code for Types 1,2,3,5 [* Journals may show tracings of the thread]	12
End Code for Type 4 [* Journals may show tracings of the thread]	8
(Screw)Dimensions	
A - Root Diameter Minimum [in]	0.537
D - Nominal Rod Diameter [in]	0.750
(Screw)Part Numbers	
3 ft. Part Number	91076
6 ft. Part Number	92076
12 ft. Part Number	93076
20 ft. Part Number	
(Screw)Performance Specifications	
Lead Accuracy +/- [in/in]	0.0003
(Screw)Weight	
Screw Weight [lb./ft.]	1.17
Inch Acme Nut with Optional Flange	
(Nut)Product Info	
Part Number	20076
Thread Direction	RH
Type	Bronze
(Nut)Details	
Lead [in]	0.166
Starts	1
Pitch [in]	0.166
Turns Per Inch	6
Lash (Maximum Axial) [in]	0.008
Nominal Rod Diameter [in]	0.750
Threads per Inch	6
Thread Code	076
Form	2C
(Nut)Dimensions	
B [in]	1.25
C [in]	1.13
E [in]	0.50
F (n) Dia. [in]	(4) .266
F BCD [in]	2.090
G [in]	0.53
H [in]	2.63
J [in]	1.000-18
(Nut)Forces and Torques	
Torque to Raise 1 lb. [in-lb]	0.073
(Nut)Flange Part Numbers	
Flange No-Lash Part Number	73262
Flange Part Number	70262
(Nut)Weight	
Flange Weight [lb]	0.78
Nut Weight [lb]	0.23
(Nut)Performance Specifications	
Efficiency [%]	36

Lead Accuracy +/- [in/in]	0.0003
Dynamic Load Capacity [lb]	2812
Static Load Capacity [lb]	9000