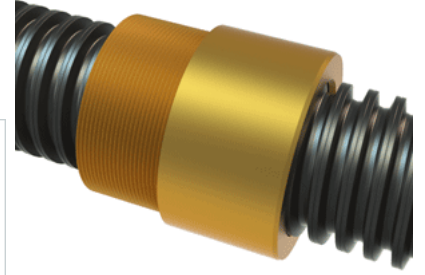


PowerAC 3"-2 RA w/Bronze Nut

Call 800-321-7800 or visit us online at www.nookindustries.com to configure and order your PowerAC 3"-2 RA w/Bronze Nut today!



Rolled Inch Acme Screw

(Screw)Product Info

Screw Code	302-RA
Thread Direction	RH
Screw Material	4140 Series

(Screw)Details

Lead [in]	0.500
Starts	1
Pitch [in]	0.500
Turns Per Inch	2
Threads per Inch	2
Thread Code	302
Form	2C
End Code for Types 1,2,3,5 [* Journals may show tracings of the thread]	60
End Code for Type 4 [* Journals may show tracings of the thread]	39

(Screw)Dimensions

A - Root Diameter Minimum [in]	2.410
D - Nominal Rod Diameter [in]	3.000

(Screw)Part Numbers

3 ft. Part Number	
6 ft. Part Number	12302
12 ft. Part Number	13302
20 ft. Part Number	10302

(Screw)Performance Specifications

Lead Accuracy +/- [in/in]	0.0006
---------------------------	--------

(Screw)Weight

Screw Weight [lb./ft.]	19.96
------------------------	-------

Inch Acme Nut with Optional Flange

(Nut)Product Info

Part Number	20302
Thread Direction	RH
Type	Bronze

(Nut)Details

Lead [in]	0.500
Starts	1
Pitch [in]	0.500
Turns Per Inch	2
Lash (Maximum Axial) [in]	0.016
Nominal Rod Diameter [in]	3.000
Threads per Inch	2
Thread Code	302
Form	2C

(Nut)Dimensions

B [in]	4.00
C [in]	4.00
E [in]	1.75
F (n) Dia. [in]	(6) .656
F BCD [in]	5.000
G [in]	1.78
H [in]	6.00
J [in]	3.625-12

(Nut)Forces and Torques

Torque to Raise 1 lb. [in-lb]	0.265
-------------------------------	-------

(Nut)Flange Part Numbers

Flange No-Lash Part Number	73302
Flange Part Number	70600

(Nut)Weight

Flange Weight [lb]	13.83
Nut Weight [lb]	7.85

(Nut)Performance Specifications

Efficiency [%]	30
----------------	----

Lead Accuracy +/- [in/in]	0.0006
Dynamic Load Capacity [lb]	45000
Static Load Capacity [lb]	144000