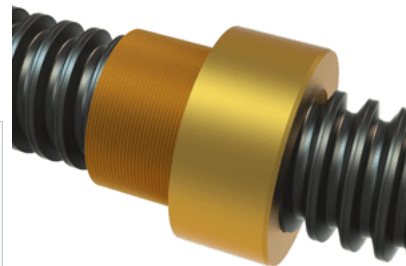


## PowerAC 2 1/4"-2 RA w/Bronze Nut

Call 800-321-7800 or visit us online at [www.nookindustries.com](http://www.nookindustries.com) to configure and order your PowerAC 2 1/4"-2 RA w/Bronze Nut today!



### Rolled Inch Acme Screw

#### (Screw)Product Info

Screw Code	222-RA
Thread Direction	RH
Screw Material	4140 Series

#### (Screw)Details

Lead [in]	0.500
Starts	1
Pitch [in]	0.500
Turns Per Inch	2
Threads per Inch	2
Thread Code	222
Form	40
End Code for Types 1,2,3,5 [* Journals may show tracings of the thread]	40
End Code for Type 4 [* Journals may show tracings of the thread]	24

#### (Screw)Dimensions

A - Root Diameter Minimum [in]	1.684
D - Nominal Rod Diameter [in]	2.250

#### (Screw)Part Numbers

3 ft. Part Number	11222
6 ft. Part Number	12222
12 ft. Part Number	13222
20 ft. Part Number	

#### (Screw)Performance Specifications

Lead Accuracy +/- [in/in]	0.0003
---------------------------	--------

#### (Screw)Weight

Screw Weight [lb./ft.]	10.58
------------------------	-------

### Inch Acme Nut with Optional Flange

#### (Nut)Product Info

Part Number	20222
Thread Direction	RH
Type	Bronze

#### (Nut)Details

Lead [in]	0.500
Starts	1
Pitch [in]	0.500
Turns Per Inch	2
Lash (Maximum Axial) [in]	0.021
Nominal Rod Diameter [in]	2.250
Threads per Inch	2
Thread Code	222
Form	40

#### (Nut)Dimensions

B [in]	3.06
C [in]	3.38
E [in]	1.56
F (n) Dia. [in]	(6) .656
F BCD [in]	4.380
G [in]	1.58
H [in]	5.38
J [in]	3.137-12

#### (Nut)Forces and Torques

Torque to Raise 1 lb. [in-lb]	0.215
-------------------------------	-------

#### (Nut)Flange Part Numbers

Flange No-Lash Part Number	73540
Flange Part Number	FLG7574

#### (Nut)Weight

Flange Weight [lb]	9.88
Nut Weight [lb]	5.25

#### (Nut)Performance Specifications

Efficiency [%]	37
----------------	----

Lead Accuracy +/- [in/in]	0.0003
Dynamic Load Capacity [lb]	25312
Static Load Capacity [lb]	81000