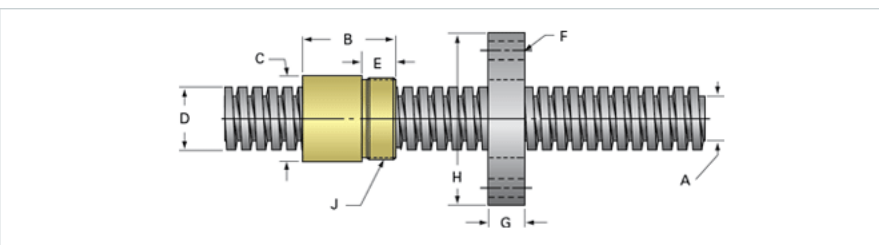
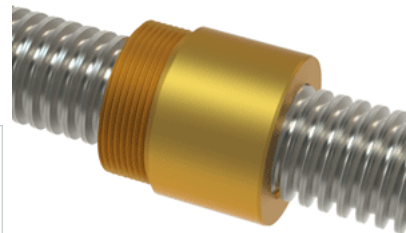


## PowerAC 1"-6 LS w/Bronze Nut

Call 800-321-7800 or visit us online at [www.nookindustries.com](http://www.nookindustries.com) to configure and order your PowerAC 1"-6 LS w/Bronze Nut today!



<b>Rolled Inch Acme Screw</b>	
<b>(Screw)Product Info</b>	
Screw Code	106-LS
Thread Direction	LH
Screw Material	300 Series Stainless
<b>(Screw)Details</b>	
Lead [in]	0.167
Starts	1
Pitch [in]	0.167
Turns Per Inch	6
Threads per Inch	6
Thread Code	106
Form	2C
End Code for Types 1,2,3,5 [* Journals may show tracings of the thread]	17
End Code for Type 4 [* Journals may show tracings of the thread]	10
<b>(Screw)Dimensions</b>	
A - Root Diameter Minimum [in]	0.786
D - Nominal Rod Diameter [in]	1.000
<b>(Screw)Part Numbers</b>	
3 ft. Part Number	94106
6 ft. Part Number	95106
12 ft. Part Number	96106
20 ft. Part Number	
<b>(Screw)Performance Specifications</b>	
Lead Accuracy +/- [in/in]	0.0003
<b>(Screw)Weight</b>	
Screw Weight [lb./ft.]	2.16
<b>Inch Acme Nut with Optional Flange</b>	
<b>(Nut)Product Info</b>	
Part Number	80106
Thread Direction	LH
Type	Bronze
<b>(Nut)Details</b>	
Lead [in]	0.167
Starts	1
Pitch [in]	0.167
Turns Per Inch	6
Lash (Maximum Axial) [in]	0.009
Nominal Rod Diameter [in]	1.000
Threads per Inch	6
Thread Code	106
Form	2C
<b>(Nut)Dimensions</b>	
B [in]	1.50
C [in]	1.50
E [in]	0.50
F (n) Dia. [in]	(4) .266
F BCD [in]	2.260
G [in]	0.52
H [in]	2.76
J [in]	1.375-16
<b>(Nut)Forces and Torques</b>	
Torque to Raise 1 lb. [in-lb]	0.089
<b>(Nut)Flange Part Numbers</b>	
Flange No-Lash Part Number	73275
Flange Part Number	FLG8281
<b>(Nut)Weight</b>	
Flange Weight [lb]	0.85
Nut Weight [lb]	0.49
<b>(Nut)Performance Specifications</b>	
Efficiency [%]	30

Lead Accuracy +/- [in/in]	0.0003
Dynamic Load Capacity [lb]	5000
Static Load Capacity [lb]	16000