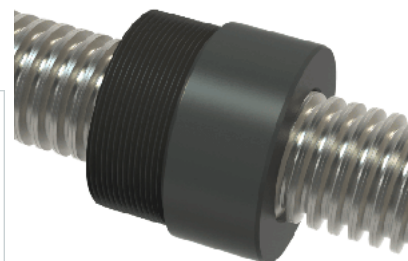
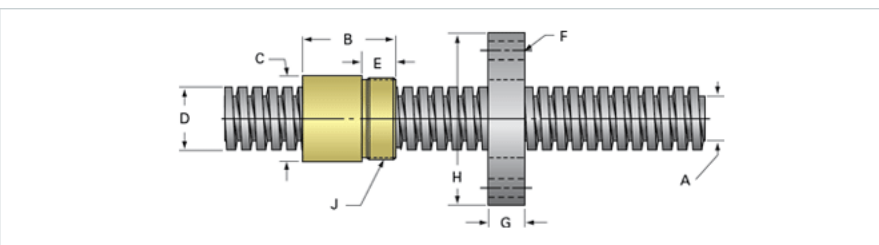


PowerAC 1 1/4"-5 LS w/Plastic Nut

Call 800-321-7800 or visit us online at www.nookindustries.com to configure and order your PowerAC 1 1/4"-5 LS w/Plastic Nut today!



Rolled Inch Acme Screw

(Screw)Product Info

Screw Code	125-LS
Thread Direction	LH
Screw Material	300 Series Stainless

(Screw)Details

Lead [in]	0.200
Starts	1
Pitch [in]	0.200
Turns Per Inch	5
Threads per Inch	5
Thread Code	125
Form	2C
End Code for Types 1,2,3,5 [* Journals may show tracings of the thread]	25
End Code for Type 4 [* Journals may show tracings of the thread]	16

(Screw)Dimensions

A - Root Diameter Minimum [in]	0.999
D - Nominal Rod Diameter [in]	1.250

(Screw)Part Numbers

3 ft. Part Number	94125
6 ft. Part Number	95125
12 ft. Part Number	96125
20 ft. Part Number	

(Screw)Performance Specifications

Lead Accuracy +/- [in/in]	0.0003
---------------------------	--------

(Screw)Weight

Screw Weight [lb./ft.]	3.49
------------------------	------

Inch Acme Nut with Optional Flange

(Nut)Product Info

Part Number	40125
Thread Direction	LH
Type	Plastic

(Nut)Details

Lead [in]	0.200
Starts	1
Pitch [in]	0.200
Turns Per Inch	5
Lash (Maximum Axial) [in]	0.010
Nominal Rod Diameter [in]	1.250
Threads per Inch	5
Thread Code	125
Form	2C

(Nut)Dimensions

B [in]	1.75
C [in]	2.13
E [in]	0.81
F (n) Dia. [in]	(4) .397
F BCD [in]	3.440
G [in]	0.83
H [in]	4.20
J [in]	1.967-18

(Nut)Forces and Torques

Torque to Raise 1 lb. [in-lb]	0.092
-------------------------------	-------

(Nut)Flange Part Numbers

Flange No-Lash Part Number	73420
Flange Part Number	FLG7572

(Nut)Weight

Flange Weight [lb]	3.19
Nut Weight [lb]	0.19

(Nut)Performance Specifications

Efficiency [%]	35
----------------	----

Lead Accuracy +/- [in/in]	0.0003
Dynamic Load Capacity [lb]	3906
Static Load Capacity [lb]	3906