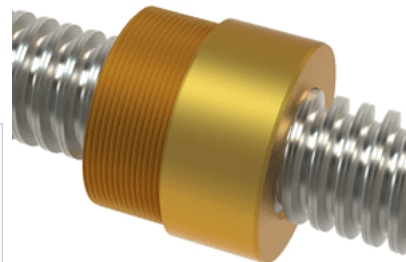


## PowerAC 1 1/4"-4 RS w/Bronze Nut

Call 800-321-7800 or visit us online at [www.nookindustries.com](http://www.nookindustries.com) to configure and order your PowerAC 1 1/4"-4 RS w/Bronze Nut today!



<b>Rolled Inch Acme Screw</b>	
<b>(Screw)Product Info</b>	
Screw Code	124-RS
Thread Direction	RH
Screw Material	300 Series Stainless
<b>(Screw)Details</b>	
Lead [in]	0.250
Starts	1
Pitch [in]	0.250
Turns Per Inch	4
Threads per Inch	4
Thread Code	124
Form	2C
End Code for Types 1,2,3,5 [* Journals may show tracings of the thread]	20
End Code for Type 4 [* Journals may show tracings of the thread]	12
<b>(Screw)Dimensions</b>	
A - Root Diameter Minimum [in]	0.947
D - Nominal Rod Diameter [in]	1.250
<b>(Screw)Part Numbers</b>	
3 ft. Part Number	91124
6 ft. Part Number	92124
12 ft. Part Number	93124
20 ft. Part Number	
<b>(Screw)Performance Specifications</b>	
Lead Accuracy +/- [in/in]	0.0003
<b>(Screw)Weight</b>	
Screw Weight [lb./ft.]	3.34
<b>Inch Acme Nut with Optional Flange</b>	
<b>(Nut)Product Info</b>	
Part Number	20124
Thread Direction	RH
Type	Bronze
<b>(Nut)Details</b>	
Lead [in]	0.250
Starts	1
Pitch [in]	0.250
Turns Per Inch	4
Lash (Maximum Axial) [in]	0.011
Nominal Rod Diameter [in]	1.250
Threads per Inch	4
Thread Code	124
Form	2C
<b>(Nut)Dimensions</b>	
B [in]	1.75
C [in]	2.13
E [in]	0.81
F (n) Dia. [in]	(4) .397
F BCD [in]	3.440
G [in]	0.83
H [in]	4.20
J [in]	1.967-18
<b>(Nut)Forces and Torques</b>	
Torque to Raise 1 lb. [in-lb]	0.117
<b>(Nut)Flange Part Numbers</b>	
Flange No-Lash Part Number	73420
Flange Part Number	FLG7572
<b>(Nut)Weight</b>	
Flange Weight [lb]	3.19
Nut Weight [lb]	1.32
<b>(Nut)Performance Specifications</b>	
Efficiency [%]	34

Lead Accuracy +/- [in/in]	0.0003
Dynamic Load Capacity [lb]	7812
Static Load Capacity [lb]	25000