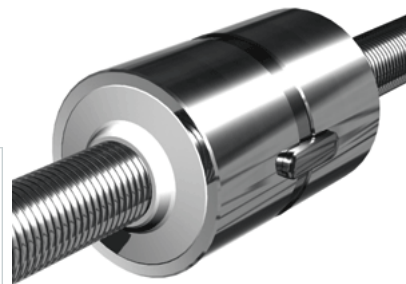


## NRS S 2W 39x15 w/Wipers

Call 800-321-7800 or visit us online at [www.nookindustries.com](http://www.nookindustries.com) to configure and order your NRS S 2W 39x15 w/Wipers today!



Product Info	
Nominal Rod Diameter [mm]	39
Details	
Lead [mm]	15
End Code for Types 1,2,3,5 [* Journals may show tracings of the thread]	35
Dimensions	
D1 [mm]	80
D7 [mm]	7
D8 [mm]	50
L1 [mm]	110
L2 [mm]	126
Keyway (L x b x h)	40x8x3
Performance Specifications	
Dynamic Load Ratings Ca [kN]	82.80
Static Load Ratings Coa [kN]	114.00