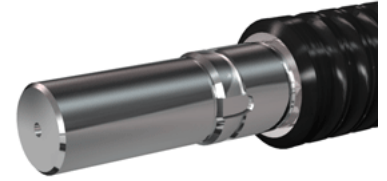
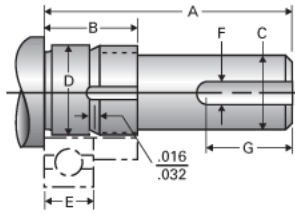


Type 1L, End Code 95

Call 800-321-7800 or visit us online at www.nookindustries.com to configure and order your Type 1L, End Code 95 today!



Product Info

Nominal Bearing Journal Size 95

Dimensions

| | |
|---|-----------------|
| C [in] | 3.500 / 3.499 |
| D [in] | 3.7402 / 3.7394 |
| F [in] | 0.875 |
| G [in] | 6.00 |
| Typical Journal for Single Bearing A [in] | 9.60 |
| Typical Journal for Single Bearing B [in] | 2.60 |
| Typical Journal for Single Bearing E [in] | 1.772 |
| Lock Nut | AN-19 |
| Lock Washer | W-19 |