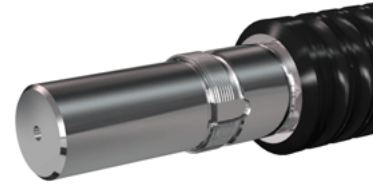
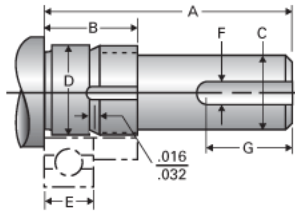


Type 1L, End Code 75

Call 800-321-7800 or visit us online at www.nookindustries.com to configure and order your Type 1L, End Code 75 today!



Product Info

Nominal Bearing Journal Size 75

Dimensions

C [in]	2.750 / 2.749
D [in]	2.9533 / 2.9527
F [in]	0.625
G [in]	3.70
Typical Journal for Single Bearing A [in]	7.68
Typical Journal for Single Bearing B [in]	2.18
Typical Journal for Single Bearing E [in]	1.457
Lock Nut	AN-15
Lock Washer	W-15