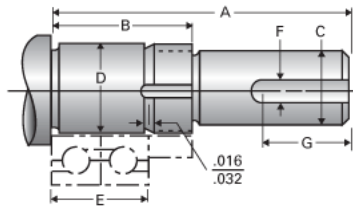


Type 2L, End Code 30

Call 800-321-7800 or visit us online at www.nookindustries.com to configure and order your Type 2L, End Code 30 today!



Product Info

Nominal Bearing Journal Size 30

Dimensions

C Maximum [in]	1.000
C Minimum [in]	0.999
D Maximum [in]	1.1814
D Minimum [in]	1.1814
F [in]	N/A
G [in]	N/A
Typical Journal for Single Bearing A [in]	3.60
Typical Journal for Single Bearing B [in]	1.79
Typical Journal for Single Bearing E [in]	1.260
Lock Nut	N-06
Lock Washer	W-06