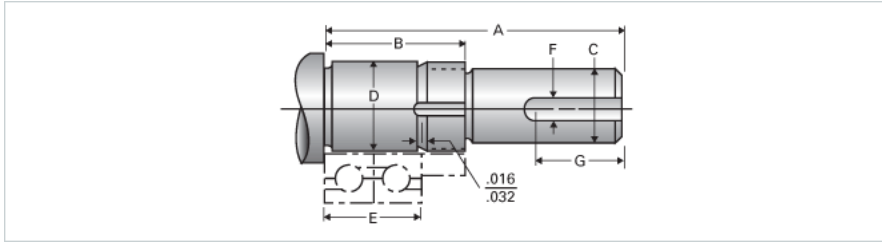


Type 2L, End Code 10

Call 800-321-7800 or visit us online at www.nookindustries.com to configure and order your Type 2L, End Code 10 today!



Product Info	
Nominal Bearing Journal Size	10
Dimensions	
C Maximum [in]	0.312
C Minimum [in]	0.311
D Maximum [in]	0.3939
D Minimum [in]	0.3936
F [in]	N/A
G [in]	N/A
Typical Journal for Single Bearing A [in]	1.67
Typical Journal for Single Bearing B [in]	1.00
Typical Journal for Single Bearing E [in]	0.630
Lock Nut	N-00
Lock Washer	W-00