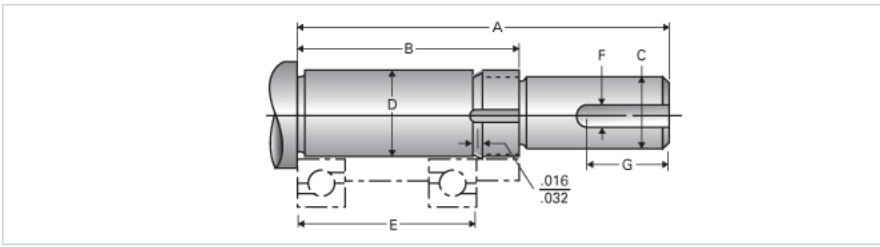


## Type 3L, End Code 105

Call 800-321-7800 or visit us online at [www.nookindustries.com](http://www.nookindustries.com) to configure and order your Type 3L, End Code 105 today!



### Product Info

Nominal Bearing Journal Size 105

### Dimensions

|   |        |
|---|--------|
| C Maximum [in]                            | 4.000  |
| C Minimum [in]                            | 3.999  |
| D Maximum [in]                            | 4.1345 |
| D Minimum [in]                            | 4.1338 |
| F [in]                                    | 1.00   |
| G [in]                                    | 6.75   |
| Typical Journal for Single Bearing A [in] | 16.62  |
| Typical Journal for Single Bearing B [in] | 8.62   |
| Typical Journal for Single Bearing E [in] | 7.716  |
| Lock Nut                                  | AN-21  |
| Lock Washer                               | W-21   |