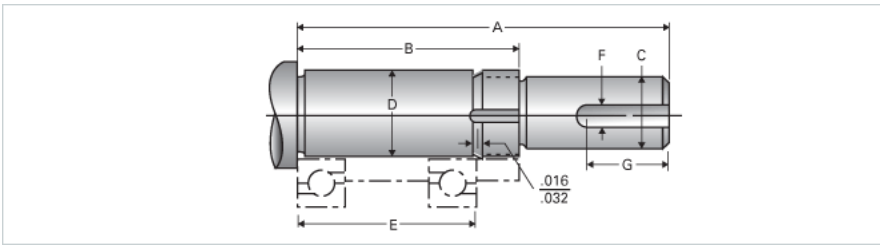


## Type 3L, End Code 20

Call 800-321-7800 or visit us online at [www.nookindustries.com](http://www.nookindustries.com) to configure and order your Type 3L, End Code 20 today!



### Product Info

Nominal Bearing Journal Size 20

### Dimensions

|   |        |
|---|--------|
| C Maximum [in]                            | 0.625  |
| C Minimum [in]                            | 0.624  |
| D Maximum [in]                            | 0.7877 |
| D Minimum [in]                            | 0.7873 |
| F [in]                                    | 0.19   |
| G [in]                                    | 1.00   |
| Typical Journal for Single Bearing A [in] | 4.03   |
| Typical Journal for Single Bearing B [in] | 2.71   |
| Typical Journal for Single Bearing E [in] | 2.204  |
| Lock Nut                                  | N-04   |
| Lock Washer                               | W-04   |