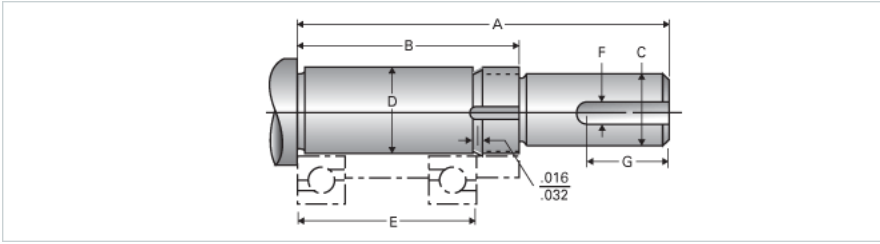


## Type 3L, End Code 6

Call 800-321-7800 or visit us online at [www.nookindustries.com](http://www.nookindustries.com) to configure and order your Type 3L, End Code 6 today!



### Product Info

Nominal Bearing Journal Size 6

### Dimensions

|   |        |
|---|--------|
| C Maximum [in]                            | 0.125  |
| C Minimum [in]                            | 0.124  |
| D Maximum [in]                            | 0.2363 |
| D Minimum [in]                            | 0.2360 |
| F [in]                                    | N/A    |
| G [in]                                    | N/A    |
| Typical Journal for Single Bearing A [in] | 1.56   |
| Typical Journal for Single Bearing B [in] | 1.26   |
| Typical Journal for Single Bearing E [in] | 0.944  |
| Lock Nut                                  | #10-32 |
| Lock Washer                               | N/A    |