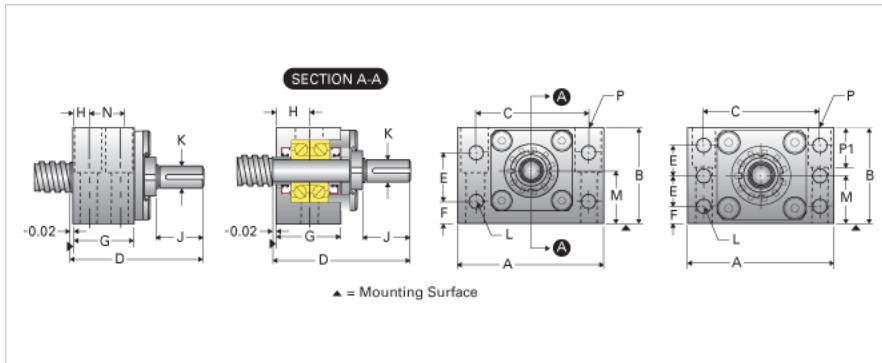
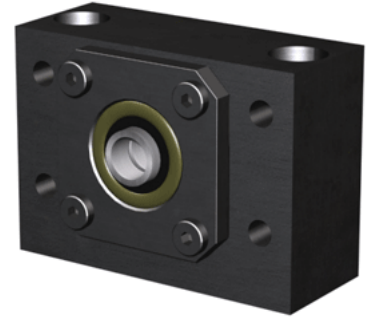


## EZZE-MOUNT EZM-3015

Call 800-321-7800 or visit us online at [www.nookindustries.com](http://www.nookindustries.com) to configure and order your EZZE-MOUNT EZM-3015 today!



### Product Info

|                                   |          |
|-----------------------------------|----------|
| Part Number                       | EZM-3015 |
| Machined End Code                 | 15       |
| Nominal Bearing Journal Size [mm] | 15       |

### Dimensions

|                               |               |
|-------------------------------|---------------|
| A [in]                        | 3.50          |
| B [in]                        | 2.52          |
| C [in]                        | 2.75          |
| D [in]                        | 3.50          |
| E [in]                        | 1.25          |
| F [in]                        | 0.80          |
| G [in]                        | 1.38          |
| H [in]                        | 0.69          |
| J [in]                        | 1.30          |
| K Shaft Diameter Maximum [in] | 0.500         |
| K Shaft Diameter Minimum [in] | 0.499         |
| L Holes [Number of Holes]     | 4             |
| L Thru [in]                   | 0.28          |
| M [in]                        | 1.438         |
| N [in]                        | -             |
| P C'Bore [in]                 | 0.62          |
| P P1 [in]                     | 1.00          |
| Q [in]                        | 0.33          |
| P - Bolt Size (2 or 4)        | 3/8 x2 1/8(2) |
| P-Thru [in]                   | 0.41          |

### Weight

|             |      |
|-------------|------|
| Weight [lb] | 2.94 |
|-------------|------|