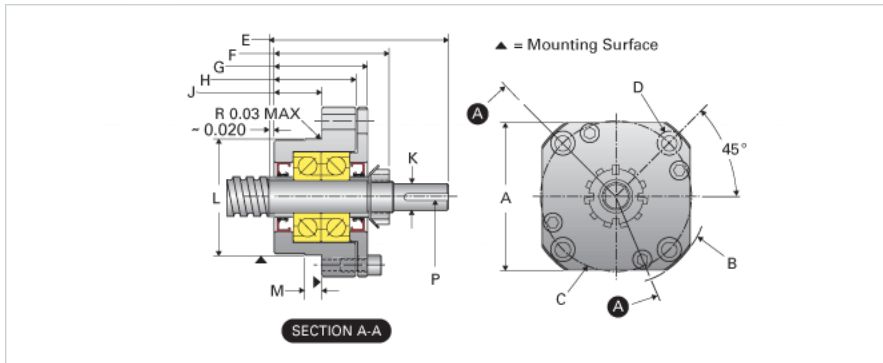
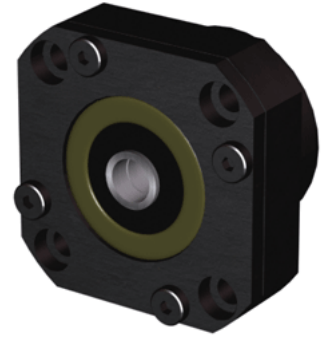


EZZE-MOUNT EZF-3015

Call 800-321-7800 or visit us online at www.nookindustries.com to configure and order your EZZE-MOUNT EZF-3015 today!



Product Info

Part Number	EZF-3015
Machined End Code	15
Nominal Bearing Journal Size [mm]	15

Dimensions

A [in]	2.70
B - Diameter [in]	3.27
C Bolt Circle [in]	2.75
C'Bore [in]	0.44
D Thru [in]	0.281
E [in]	3.50
F [in]	2.10
G [in]	1.71
H [in]	1.50
J [in]	0.88
K Shaft Diameter Maximum [in]	0.500
K Shaft Diameter Minimum [in]	0.499
L Minimum [in]	2.1250
L Maximum [in]	2.1256
M [in]	0.312
P [in]	0.125
Q [in]	0.20

Weight

Weight [lb]	2.00
-------------	------